

Club Re-Opening GUIDE

Updated: 4 July 2020

Restrictions to Club Entry

- **No entry** for those who are quarantined, serving their Stay-Home-Notice or have travelled overseas in the last 14 days, **unless exempted by the relevant authority**
- **No entry** if you are unwell, having a fever or experiencing flu-like symptoms

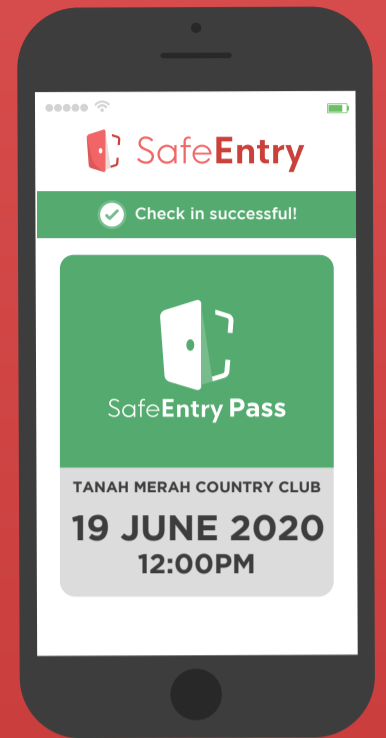
CLUB ENTRY & ARRIVAL

All Members, Guests and Staff will have their temperature checked and will be required to check-in and check-out with SafeEntry via any of these methods:

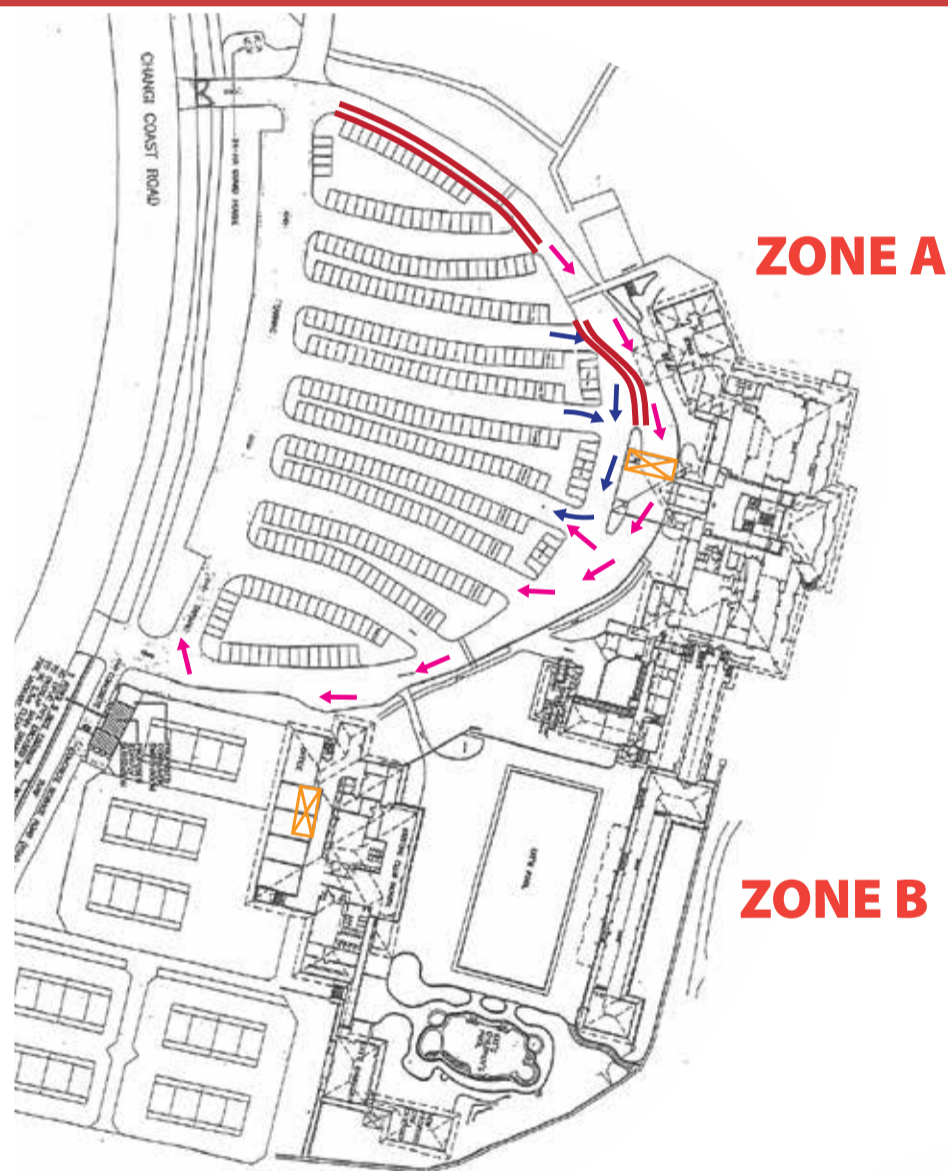


SafeEntry

QR Code (located at entry points and also available on TMCC's website) or Scan NRIC/Passion Card/Trace Together App or Singpass App



Garden Location



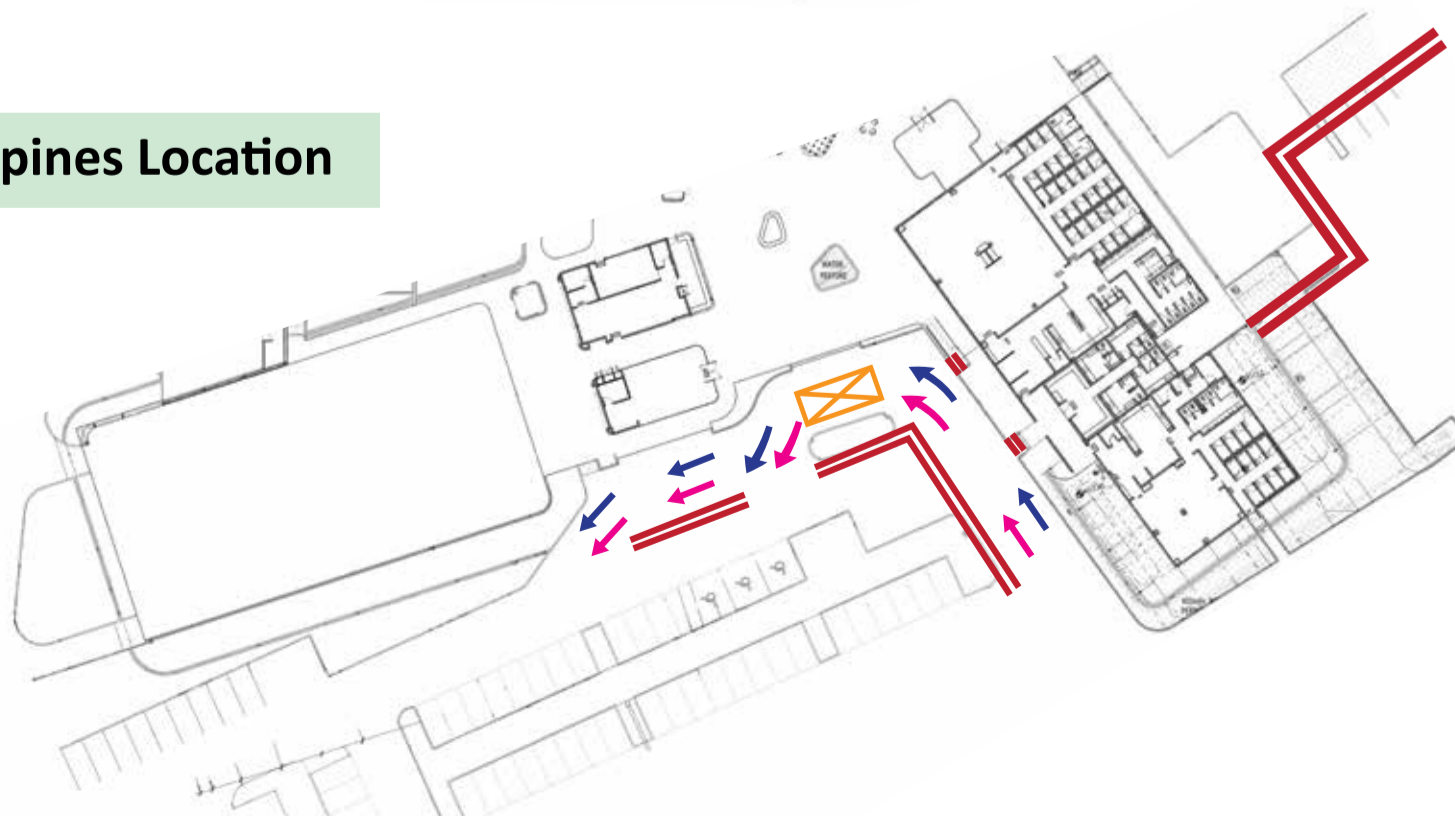
Garden Location



Tampines Location



Tampines Location

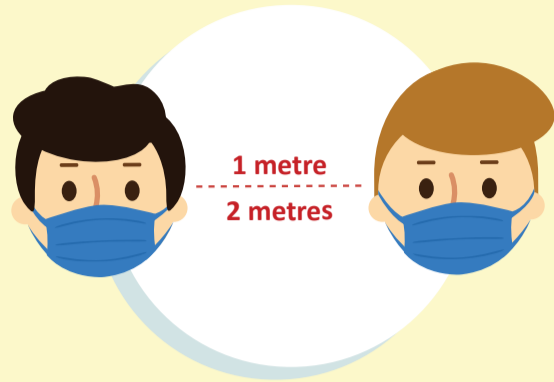


LEGEND

- Barrier
- Cars entering Club & dropping golf bags
- Cars collecting bags & exiting Club
- Safe Entry Scan + Temperature Taking

GENERAL ADVISORIES & MITIGATION MEASURES

Safe Distancing



Maintain **at least 1 metre apart** from the next person or **2 metres when exercising**



Wear a mask at all times unless engaging in strenuous activities.

Hygiene Mitigation Measures



- **High contact touch points** shall be hard sanitised with a chemical coating which will keep surfaces sanitised for weeks.
- All **gym equipment** are regularly sanitised throughout the day.
- All **golf buggies** will be thoroughly cleaned and sanitised after each round before reissue.
- **Ice making machines: Not in use**



- **Hand sanitisers** will be placed throughout the Clubhouse for Members' uses
- **No reading materials will be available.**

Personal Hygiene

Practise good personal hygiene at all times.



Wash hands regularly.
Hand sanitisers available.



Avoid touching your face with your hands



Cough into tissue and throw away in the dustbin



Visit your doctor if you are feeling unwell

GOLF

Golf Courses

Status

Course Maintenance Days

DID

OPEN

Tampines Mondays (Whole day)
Wednesdays (AM)

Garden Tuesdays (AM)
Thursdays (AM)

Tampines 6513 7818 / 6513 7819

Garden 6592 0343 / 6545 1731

RESTRICTIONS

- Golfers must practice safe distancing **at least 2 metres apart.**
- Golfers **must mask up** unless striking the ball.
- In the event play is suspended, such as during lightning warning, the affected session **may be cancelled.** (Please refer to inclement weather policy under Appendix A)
- Golfers are to proceed to their respective buggies on arrival as the changing room and 19th hole will have restricted access and controls. Be ready to play on arrival.
- Golfers to adopt the **“USE AND LEAVE”** policy.
- **Changing room** - Golfers should only shower if absolutely necessary and leave soon after.
- **Toilet facilities** - available.
- Plan your trip to allow time to complete your SafeEntry check on arrival.
- Golfers' Terrace will be available for access on a quick turnaround basis ie like the 9 hole break. This is to minimise crowding and to comply with the authorities advisory.
- Safe Play:
 - * Don't touch flagsticks
 - * No bunker rakes - local rule applies
 - * No on course ball washers
 - * No on course water stations
 - * No sharing of golf equipment
- No more than **5 pax per flight** including caddie.

GOLF

Golfing

Status

OPEN

Operating Hours

Tampines 7.00am to 7.30pm

Garden 7.00am to 7.30pm

Weekend Bookings

By balloting till further notice.

On Fridays 7.30am - 3.00pm

Weekday Bookings

Online and phone bookings.

Bookings 7 days in advance open from 7.00am

DID

Tampines 6513 7818 / 6513 7819

Garden 6592 0343 / 6545 1731

RESTRICTIONS

- **No walk-in bookings** until further notice.
- **Priority bookings given to members.**
- Members who wish to introduce guests are advised to register with the Golf Office. Available flights will be allocated, 3 days prior from the date of play for weekdays and weekends.
- **Minimum 3-ball for Weekday and Weekend bookings.** Please refer to latest updated golf booking information from the website [CLICK HERE](#)

www.tmcc.org.sg/tmccv8_latest_news/phase-2-golf-booking-system-for-weekdays-and-weekends/

Driving Range

Status

OPEN

Operating Hours

Mondays Closed whole day

Wednesdays AM closed till 11.30am

Tuesdays to Sundays 7.00am to 8.30pm

Last ball issue 8.00pm

DID

Tampines 6513 7818 / 6513 7819

RESTRICTIONS

- **Driving Range: Max 30 golfers**
- **Putting Green: Max 4 golfers**
- **Chipping Green: Max 2 golfers**
- Golfers must practice safe distancing **at least 2 metres apart.**
- Pin flags will be removed from the practice putting greens.

GOLF

Changing Rooms

Status

OPEN

Operating Hours

7.00am to 10.00pm (Daily)

RESTRICTIONS

- **Stringent Capacity Limits** will be imposed at **ALL** times.
- **Numbered Tags** will be issued to ensure that the changing room capacity limits are not breached. Members are reminded to return the numbered tags when leaving the changing room.
- Only **Alternate Lockers** will be issued (to ensure physical distancing).
- **High-touch points** will be cleaned and disinfected at least twice or more a day, including:
 - Keys (before reissue)
 - Key Cards (before reissue)
 - Door handles
- **Bath towels** can now be issued.
- **ALL Amenities and Hairdryers** will be removed to encourage a **“Use and Leave”** policy.
- Users must not socialise and should minimise interaction.

Tampines

- Male Changing Room - **Max 49 persons**
- Female Changing Room - **Max 26 persons**

Garden

- Male Changing Room - **Max 42 persons**
- Female Changing Room - **Max 17 persons**

Garden Golfers' Terrace

Status

OPEN

Operating Hours

Mondays & Wednesdays	7.00am to 8.00pm
Tuesdays & Thursdays	11.00am to 8.00pm
Fridays to Sundays & PH	7.00am to 10.00pm
Eve of PH	7.00am to 10.00pm

DID

6545 4603 / 6592 0380

RESTRICTIONS

- **Max 5 persons** per table.
- **No mixing between groups** from different groups.
- **At least 1 metre** safe distancing between individuals.
- **All tables will be at least 1 metre apart.**
No moving or joining of tables is allowed.
- **Face masks must be worn at ALL times** unless when eating or drinking.

Tampines Golfers' Terrace

Status

OPEN

Operating Hours

Tuesdays	7.00am to 8.00pm
Wednesdays	11.00am to 8.00pm
Thursdays to Sundays & PH	7.00am to 8.00pm
Eve of PH	7.00am to 8.00pm

Closure

Mondays (Whole day)
Except on Public Holidays

DID

6513 7815

RESTRICTIONS

- **Max 5 persons** per table.
- **No mixing between groups** from different groups.
- **At least 1 metre** safe distancing between individuals.
- **All tables will be at least 1 metre apart.**
No moving or joining of tables is allowed.
- **Face masks must be worn at ALL times** unless when eating or drinking.

F&B

Garden View Restaurant

Status

OPEN

Operating Hours

Tuesday to Sundays 12.00pm to 3.00pm
6.30pm to 10.00pm

Closure

Mondays (Whole day) Except on Public Holidays

DID

6545 2891 / 6592 0388

RESTRICTIONS

- **Max 5 persons** per table.
- **No mixing between groups** from different groups.
- **At least 1 metre** safe distancing between individuals.
- **All tables will be at least 1 metre apart.**
No moving or joining of tables is allowed.
- **Face masks must be worn at ALL times** unless when eating or drinking.
- No private bookings.

Poolside Cafeteria

Status

OPEN

Operating Hours

Tuesdays to Fridays 12.00pm to 8.00pm
Weekends & PH 8.00am to 8.00pm

Closure

Mondays (Whole day) Except on Public Holidays

DID

6592 0381

RESTRICTIONS

- **Max 5 persons** per table.
- **No mixing between groups** from different groups.
- **At least 1 metre** safe distancing between individuals.
- **All tables will be at least 1 metre apart.**
No moving or joining of tables is allowed.
- **Face masks must be worn at ALL times** unless when eating or drinking.

Garden Lounge

Status

CLOSED

SPORTS

GYM

Status

OPEN

Operating Hours

7.00am to 9.30pm (Daily)

DID

6592 0309

Power Workouts

Conducted via Zoom only

Mondays, Wednesdays & Fridays - 11.00am to 12.00pm

RESTRICTIONS

- Maintain safe distancing **at all times.**
- **Max 10 persons** at any one time.
- **No guests allowed.**
- All Members **must sanitise their hands** before entering the gym.
- Alternate gym equipment closed.
- All gym users are reminded to clean the gym equipments before and after each use.

Swimming Pool

Status

OPEN

Operating Hours

7.00am to 9.30pm (Daily)

DID

6592 0313

RESTRICTIONS

- Maintain safe distancing **at all times.**
- **Max 16 persons** in the pool at any one time.

SPORTS

Changing Rooms

Status

OPEN

Operating Hours

7.00am to 10.00pm (Daily)

RESTRICTIONS

- **Stringent Capacity Limits** will be imposed at **ALL** times.
- **Numbered Tags** will be issued to ensure that the changing room capacity limits are not breached. Members are reminded to return the numbered tags when leaving the changing room.
- Only **Alternate Lockers** will be issued (to ensure physical distancing).
- **High-touch points** will be cleaned and disinfected at least twice or more a day, including:
 - Keys (before reissue)
 - Key Cards (before reissue)
 - Door handles
- **Bath towels** can now be issued.
- **ALL Amenities and Hairdryers** will be removed to encourage a “**Use and Leave**” policy.
- Users must not socialise and should minimise interaction.
- Male Changing Room - **Max 14 persons.**
- Female Changing Room - **Max 11 persons.**
- Children Changing Room - **Max 3 persons.**

SPORTS

Tennis

Status

OPEN

Operating Hours

7.00am to 10.00pm (**Daily**)

DID

6592 0313

RESTRICTIONS

- **Max 4 players** per court.
- No sharing of equipment.
- Each player is encouraged to have their own set of balls marked distinctively

Squash

Status

OPEN

Operating Hours

7.00am to 10.00pm (**Daily**)

DID

6592 0313

RESTRICTIONS

- **Max 2 players** per court.
- No sharing of equipment.

Table Tennis

Status

OPEN

Operating Hours

7.00am to 10.00pm (**Daily**)

DID

6592 0313

RESTRICTIONS

- **Max 4 players** per table.
- No sharing of equipment.

SPORTS

Basketball

Status

OPEN

Operating Hours

7.00am to 10.00pm (Daily)

DID

6592 0313

RESTRICTIONS

- **Max 5 players** per court.

Badminton

Status

OPEN

Operating Hours

7.00am to 10.00pm (Daily)

DID

6592 0313

RESTRICTIONS

- **Max 4 players** per court.

Reading Room

Status

OPEN

Operating Hours

7.00am to 10.00pm (Daily)

DID

6592 0313

RESTRICTIONS

- **Max 2 persons** at one time.

Jackpot Room

Status

(Opens 6 July 2020)

Operating Hours

1.00pm to 9.30pm (Daily)

DID

6592 0308

RESTRICTIONS

- Maintain safe distancing **at all times.**
- **Max 9 persons** (including staff) at one time.
- Only Members above 21 years of age are allowed.
- **No Guest allowed.**
- F&B are not allowed.
- No loitering, only gaming members are allowed.

SPORTS

Children's Room

Status

CLOSED

Karaoke Room

Status

CLOSED

Mahjong Room

Status

CLOSED

Kids' Pool

Status

CLOSED

Pool Table

Status

CLOSED

Foosball Table

Status

CLOSED

Appendix A

PHASE 2 - GOLF OPERATIONS

INCLEMENT WEATHER POLICY

(21 June 2020)

If play is suspended due to inclement weather, the affected session may be **cancelled** to comply with Safe Distancing Guidelines.

MORNING SESSION

Should the **inclement weather suspension** be lifted **before 8:00am**, play shall resume as per timesheet after the suspension period. **Flights affected by the suspension shall be organised to play from different holes, when play resumes.**

Should the **inclement weather suspension** be lifted **after 8:00am**, the entire morning session's play shall be **cancelled**.

AFTERNOON SESSION

Should the **inclement weather suspension** be lifted **before 1:00pm**, play shall resume as per timesheet after the suspension period. **Flights affected by the suspension shall be organised to play from different holes, when play resumes.**

Should the **inclement weather suspension** be lifted **after 1:00pm**, the entire afternoon session's play shall be **cancelled**.

IMPORTANT NOTES

- Players waiting to tee-off are advised not to congregate, mix around or mingle between groups and to always observe safe distancing.
- Flights to be deployed to tee-off at different starting holes, please follow the directions of our Marshals for resumption of play. Golfers are not permitted to drive off into the course without the prior direction of our Marshals.
- Once a session has been cancelled, all players must collect their golf bags and leave the Club as soon as possible. Do not remain in the club house, assemble at the half-way house or clubhouse to avoid overcrowding.
- Please check the club's website for weather updates and other important information.