



Tanah Merah

COUNTRY CLUB

JANUARY / FEBRUARY 2021

LUNAR NEW YEAR CELEBRATION
2020 AT TAMPINES COURSE



TMCC COPEd WELL IN A COVID TROUBLED YEAR

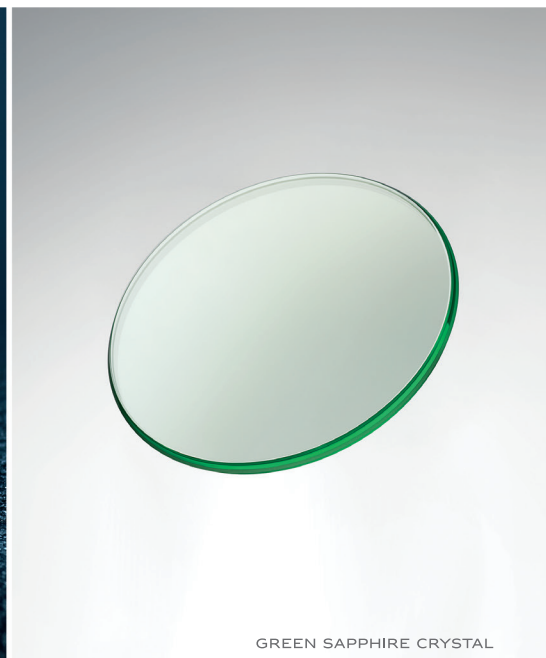
GARDEN COURSE INVITATIONAL



SINGAPORE WOMEN'S OPEN
SIGNING CEREMONY



TMCC'S FIRST 'VIRTUAL' AGM



GREEN SAPPHIRE CRYSTAL



ORANGE LIGHTNING BOLT HAND

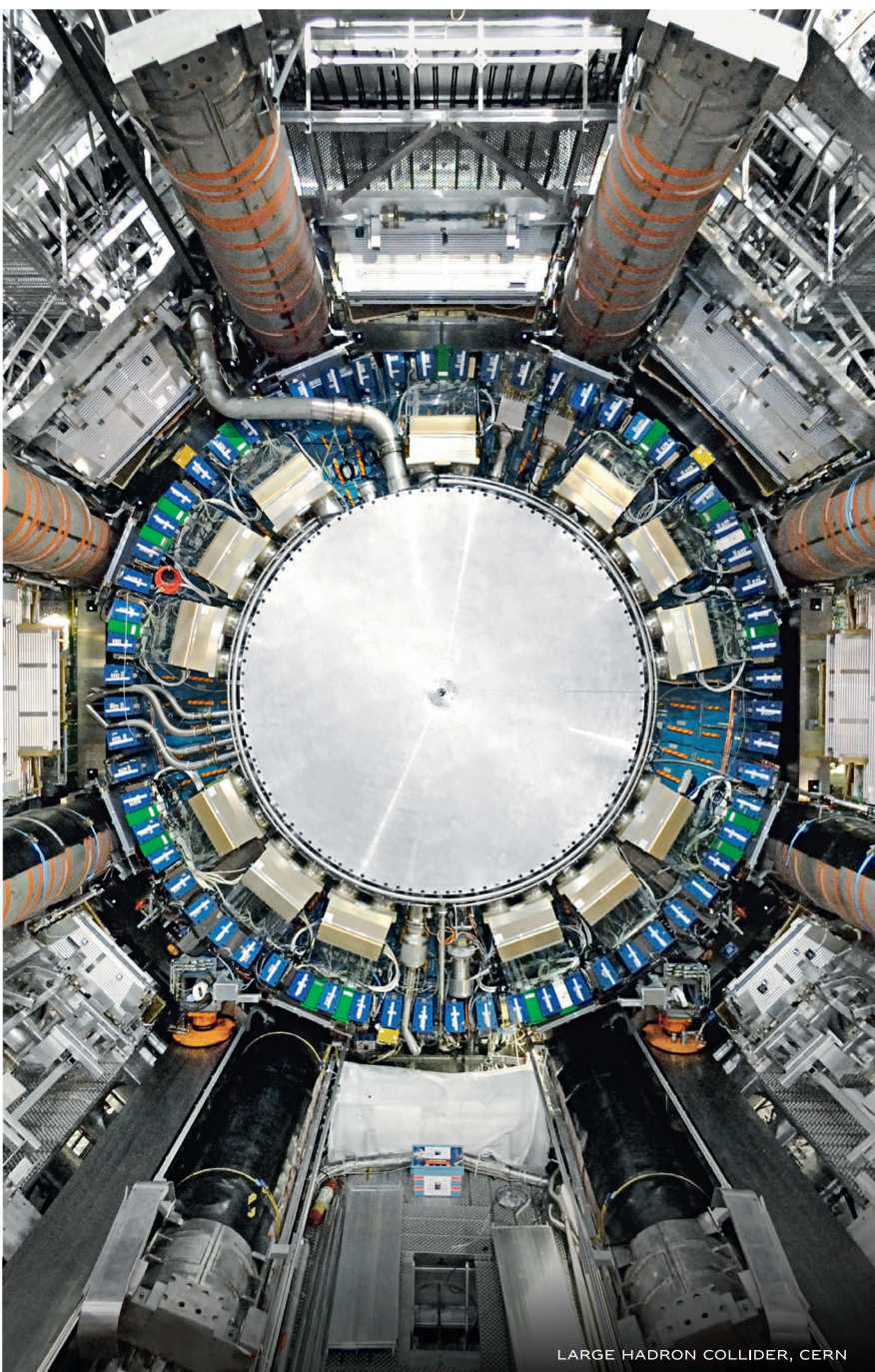


MAGNETIC SHIELD

THE MILGAUSS

Introduced in 1956, and tested at CERN where it was exposed to the strong magnetic forces created by their experiments, the Milgauss is capable of resisting interference up to 1,000 gauss, far exceeding any conditions encountered on Earth. Today, the Milgauss's lightning bolt seconds hand and unique green sapphire crystal remain symbols of innovation and ingenuity in the scientific community.

#Perpetual



LARGE HADRON COLLIDER, CERN



OYSTER PERPETUAL MILGAUSS


ROLEX



T H E



Combining bold new design with thrilling driving dynamics, enjoy every edge with THE 4.

Redesigned with a striking front, distinct vertical grille and flowing silhouette, the all-new BMW 4 Series Coupé is also built for extraordinary athleticism, so you can focus squarely on dynamic driving pleasure.

On the inside, leading-edge connectivity makes mobile integration more seamless than ever before, offering you the most integrated driving experience yet.*

Discover your edge with THE 4 at **bit.ly/bmwthe4coupe** or call **1800-2255-269** to book your test drive now.



Scan to find out more.

*Car specifications may vary from the model shown. Options and features are model-dependent. This advertisement provides information on BMW products and does not constitute an offer of sale. Any sale is subject to applicable terms and conditions.

BMW 420i Coupé Fuel Consumption: 5.8 l/100km, VES Band: B

BMW 430i Coupé Fuel Consumption: 6.2 l/100km, VES Band: B

COMMITTEE & MANAGEMENT LISTS

MANAGEMENT

GENERAL MANAGER

PA to GM

Kok Min Yee

Lee Pei Wen

minyee@tmcc.org.sg

6592 0300

gmpa@tmcc.org.sg

6592 0301

DIRECTOR OF GOLF

Senior Golf Executive
Golf Executive
Horticulturist
Course Superintendent
Course Superintendent
Sports & Recreation Executive

Ian Geoffrey Roberts

Samantha Leong

William Chua

Sharon Chew

Adrian Tng

Derrick Tan

Dean Singh

ian@tmcc.org.sg

6592 0382

samantha@tmcc.org.sg

6592 0340

sharonchew@tmcc.org.sg

6592 0351

adriantng@tmcc.org.sg

6592 0394

derricktan@tmcc.org.sg

6592 0249

dean@tmcc.org.sg

6592 0312

F&B Manager

Executive Chef

Assistant F&B Manager

Assistant F&B Manager

Sales & Marketing Manager

Marketing & Sales Executive

Marketing & Events Executive

Marcom Executive

Glenn Lee

Daniel Sng

Kelvin Tong

Sharon Lee

Sally Chua

Wong Pei Ying

Dennis Tay

Samuel Tan

glennlee@tmcc.org.sg

6592 0385

danielsng@tmcc.org.sg

6592 0374

kelvintong@tmcc.org.sg

6592 0386

sharonlee@tmcc.org.sg

6592 0302

sallychua@tmcc.org.sg

6592 0303

peiying@tmcc.org.sg

6592 0305

dentay@tmcc.org.sg

6592 0317

samueltan@tmcc.org.sg

6543 0363

DIRECTOR OF CORPORATE SERVICES

HR Manager
HR Executive
HR & Admin Executive
IT Operation Manager
IT Officer
Assistant Manager, Membership Services
Facilities Manager
Facilities Executive
Chief Security Officer
Housekeeper

Jeanie Milakov

Lee Choy Fong

Shirley Siew

Dennis Tong

Yee Yung Lon

Mohamad Khairul

Eileen Lin

Eddie Lee

Abdul Wahab Bin Mohamed Noor

Abdul Rahman Bin Yacob

Hassan Bin Ali

jeanie@tmcc.org.sg

6592 0330

leechoyfong@tmcc.org.sg

6592 0454

shirleysiew@tmcc.org.sg

6592 0328

dennistong@tmcc.org.sg

6592 0325

leeyunglon@tmcc.org.sg

6592 0336

khairulwagimin@tmcc.org.sg

6592 0384

eileenlin@tmcc.org.sg

6592 0326

eddie@tmcc.org.sg

6592 0320

wahab@tmcc.org.sg

6592 0321

rahman@tmcc.org.sg

6592 0347

hassan@tmcc.org.sg

6592 0360

CHIEF FINANCIAL OFFICER

Director of Finance
Accountant
Assistant Manager, Purchasing
Jackpot Executive

Daniel Jee

Lau Tak Kee

Dorothy Chew

Patrick Poon

Dino Lim

danieljee@tmcc.org.sg

6592 0333

lautakkee@tmcc.org.sg

6592 0333

dorothycheew@tmcc.org.sg

6592 0337

patrick@tmcc.org.sg

6592 0323

dinolim@tmcc.org.sg

6592 0308

CONTACT US

GOLF

Tampines Golf Office

Telephone

6513 7818 / 6513 7819

FOOD & BEVERAGE

Garden View Restaurant
Garden Golfers' Terrace
Tampines Golfers' Lounge
Private Dining Rooms Bookings
Private Functions Bookings

Telephone

6592 0388 / 6545 2891

6592 0380 / 6545 4603

6513 7815

6592 0388

6592 0386

SPORTS & RECREATION

Swimming, Squash & Tennis
The Glass Gym
Jackpot Lounge

Telephone

6592 0312 / 6592 0313

6592 0309

6592 0308

For billing and membership subscription, please email: billing@tmcc.org.sg

For membership sales, please email: membership@tmcc.org.sg

For corporate golf events, please email: marketing@tmcc.org.sg

For sport complex events, please email: sportcomplex@tmcc.org.sg

For membership Personal Data Protection, please email: pdpl@tmcc.org.sg

For service feedback, please email: feedback@tmcc.org.sg

For job application, please email: hr@tmcc.org.sg

EDITOR

Godfrey Robert

OFFICIAL PHOTOGRAPHERS

Frederick Tan

Edward Gan

Tharm Sook Wai

Tanah Merah Newsmagazine is published bi-monthly by Tanah Merah Country Club, 1 Tanah Merah Coast Road, Singapore 498722.

Tel: (65) 6542 3040 (Main line)

Fax: (65) 6542 9294

Website: www.tmcc.org.sg



Tanah Merah Country Club



@tanahmerahcountryclub

PATRON

Emeritus Senior Minister Goh Chok Tong

CHAIRMAN

Ng Kee Choe

DEPUTY CHAIRMEN

Niam Chiang Meng

GENERAL

COMMITTEE 2020/2022

PRESIDENT

Ho Beng Huat

VICE PRESIDENT

Chris Liew Peng Fook

CAPTAIN

Lee Lian Hong

TREASURER

Ronald Ong Whatt Soon

CONVENOR (F&B)

Benny Tay Yew Lim

CONVENOR (H&R)

Christopher Chiu

CONVENOR (MARKETING)

Joey Chang Wei Nang

VICE CAPTAIN

Dr Goh Hoon Pur

MEMBERS

Chan Kok Seong

Alan Foo Siang Huat

Hia Hui Kim

S K Ramadas Naidu

Lynnette Yeo Ee Lyn

EXECUTIVE COMMITTEE (EXCO)

CHAIRMAN

Ho Beng Huat

MEMBERS

Chris Liew Peng Fook

Lee Lian Hong

Ronald Ong Whatt Soon

Benny Tay Yew Lim

Christopher Chiu

Joey Chang Wei Nang

GREENS COMMITTEE

CAPTAIN

Lee Lian Hong

VICE CAPTAIN

Dr Goh Hoon Pur

LADY CAPTAIN

Gillian Sim Siu Lin

MEMBERS

Joey Chang Wei Nang

Christopher Chiu

Hia Hui Kim

Francis G. Remedios

Tan Boon Hoo

Lynnette Yeo Ee Lyn

AUDIT COMMITTEE

CHAIRMAN

Niam Chiang Meng

MEMBERS

S K Ramadas Naidu

Po'ad Mattar

Peter Sim Swee Yam

Ernest Seow Teng Peng

Teoh Tee Hooi

**TO ADVERTISE, PLEASE CALL MARKETING DEPARTMENT AT 6592 0303 / 6592 0304;
EMAIL MARKETING@TMCC.ORG.SG**

All information and dates pertaining to reports and upcoming events published in this newsmagazine are correct at the time of printing. The views of the contributors and writers do not necessarily represent those of the Club. All rights reserved. No part of the E-newsmagazine should be reproduced without prior written permission from the Club. All correspondence should be addressed to the Editor, Tanah Merah E-newsmagazine.

CONTENTS

JANUARY / FEBRUARY 2021 • ISSUE 5

FINANCE COMMITTEE

TREASURER

Ronald Ong Whatt Soon

MEMBERS

Chris Liew Peng Fook
Chan Kok Seong
Wiltfred Goh Teck Yew
Victor Liew Cheng San
Tan T Kiang
Wee Jim Hock

FOOD & BEVERAGE COMMITTEE

CONVENOR

Benny Tay Yew Lim

MEMBERS

Chan Wing Leong
Frankie Chua Kee Hin
Nico Mo
S K Ramadas Naidu
Charles Quek

HOUSE & RECREATION COMMITTEE

CONVENOR

Christopher Chiu

MEMBERS

Melvin Choo Kwok Ming
Hia Hui Kim
Raymond Lim Tiam Teng

MARKETING COMMITTEE

CONVENOR

Joey Chang Wei Nang

CREATIVE ADVISOR

Christopher Chiu

MEMBER

Tan Ju Kuang
Wong Weng Yew

DISCIPLINARY PANEL

CHAIRMAN

Chris Liew Peng Fook

DEPUTY CHAIRMANS

Dr Goh Hoon Pur
Dr Neo Eak Chan

MEMBERS

Chay Yee
Victor Liew Cheng San
S K Ramadas Naidu
Gillian Sim Siu Lin

LADIES GOLF SUB-COMMITTEE

LADY CAPTAIN

Gillian Sim

MEMBERS

Lynnette Yeo
Sarah Tan Wei
Yeo Su Lynn



NOTICE

FACILITIES CLOSURE DURING
LUNAR NEW YEAR 2021

PAGE 10

FACES OF TMCC

Family Bonds key to tackling
Covid-19 Challenges

PAGE 12

GOLFERS ZONE

Wet, wet, wet, yet TMCC is not
left high and dry

PAGE 14

Phase 3 Garden Course Safety
Enhancement Tree Planting

PAGE 16

The Traffic Light Drill Takes off
Mental Stress

PAGE 18

Surge in Golf Bookings at Garden
and Tampines Courses

PAGE 19

No Buts or Ifs, Just Stop the Bad
Habits

PAGE 20

Club Competition Winners 2020

PAGE 21

Hole-in-One Achievers

PAGE 22

SPORTING FUN

Jurassic Mile Tour was a Hit
with 34 Participants

PAGE 24

TMCC Walk the Talk

PAGE 26

Tan Triumphs in a strong field of Lim's

PAGE 28

BITES & CHEER

Wine of the Month

PAGE 30

A Prosperous Lunar New Year Feast –
Takeaway Menu

PAGE 34

Lunar New Year – Dine-in Set Menu

PAGE 35

CLUB INFORMATION

PAGE 41

CLUB SAFE MANAGEMENT GUIDE

PAGE 45

TMCC COPEd WELL IN A COVID- TROUBLED YEAR

By Godfrey Robert



No doubt the pace slowed in 2020 after an active decade of events and welcome changes

Vision 2020 is a commonly used label to focus on a project with the aim of providing good outcomes for a plethora of situations and events.

It is also a global initiative through which this vision aims to eliminate avoidable blindness by the year 2020, something that was launched in 1999 by the World Health Organisation.

For Tanah Merah Country Club, Vision 2020 was all about seeing through a decade's worth of achievements, culminating in the infirmity of blindness being totally eradicated in the club's sights as it moves forward into another golden decade.

The year 2020 may have started with a pandemic that wrecked economies, fortunes and the well-being of populations forcing the world to move towards a new normal.

TMCC was not spared by Covid-19, as it had been universally seen where plans have gone awry, events being cancelled and the golf courses left without activity.

After a decade of notable successes, it was hard to take the Covid-19 blow. But the manner in which TMCC coped with the pandemic is a statement of intent by the club that it would take any knock smack on the chin, and bounce back.

From 2010, TMCC had upped its ante by engaging in more robust activities, spiced-up events, forward-looking engagements and infusing excitement in members to provide a dynamid and high-octane atmosphere around the reputed club in the east of Singapore.

Transfers of authority in management have been done in smooth and efficient ways without controversy, club improvements were evident in all areas, both in hardware and software, and a flurry of activities were organised to keep the club ticking.

So the club had organised the Lexus Cup and the World Women's Championship which brought together the world's best players to the Garden and Tampines Courses. And from these events, the club was portrayed to the world via television and social media as one of the leading venues in the region and beyond.

During this period the Tampines and Garden Courses had undergone redevelopment with the mindset that with the loss of land in the later course due to Government acquisition, the former had to be turned into a championship layout so that it can stage major events as the Garden Course used to do.

The Tampines Course has received rave reviews for its challenge and difficulty, and this would suit the idea of attracting top players to competitions being staged here. Added to the beautiful course is a fabulous clubhouse which also allows for perfect viewing of the golf action on the finishing holes.

But the Garden shouldn't be looked upon as second-rated, for although it was turned into a par-70 from the original par-72, and now a par-71, this layout, despite being shortened by 20 hectares, also has its unique features that include some of the finest holes to allow for strong mental application to one's game.



No doubt, over the past year the Covid-19 pandemic had brought the best out of the TMCC management and staff in handling a very tough environment. Courses were closed, staff had to be redeployed and many activities came to a standstill. But the club used the downtime to spruce up many areas and keep the courses in great shape.

TMCC prides itself in the fact that during a period of national job losses and retrenchment, it did not let any staff go and for the Malaysians who could not travel back because of restrictions and quarantine impositions, it provided accommodation, meals and facilities for proper stay here.

And to keep them wired to their Malaysian homes and families, the club upgraded its technology to allow for communication via Face Time, Video Calls and other channels to keep them “at home”.



Sacrifices were also made by numerous staff, especially the frontline people in Facilities, F&B, Golf Office, Golf Course Maintenance, Housekeeping and Security who went the extra distance to keep the club ticking during the Circuit Breaker period.

Even now, despite the opening of Phase Three on Dec 28 which allows some relaxation of rules, TMCC will continue to be vigilant and adhere to strict Safety regulations and encourage its members to follow suit.

And the adherence to strict safety measures does not mean the club will let up on activities. Among its recent activities were engaging members for the Changi Jurassic Mile Walking Tour, Pasir Ris Park Walk, Christmas Themed Tennis Night and utilisation of golf courses for which the rate has gone up tremendously, sometimes up to 100 per cent.

In that respect the club offers a vote of confidence on the members and compliments them for continuing to observe COVID-19 rules, such as safe distancing measures and proper use of face masks.

So as we bid goodbye to a troubled year, we look forward to 2021 with much hope and optimism towards a bright and successful year at the dawn of a new decade.

Happy New Year.

FACILITIES CLOSURE DURING LUNAR NEW YEAR 2021



	Departments / Facilities	Thu 11 Feb 2021 Eve of Lunar New Year	Fri 12 Feb 2021 Lunar New Year PH	Sat 13 Feb 2021 Lunar New Year PH
GOLF GARDEN	Garden Course	AM Open PM last flight at 1.03pm No evening 9-hole	CLOSED	Open AM/PM/ Eve 9-hole
	Garden Golf Office	7am to 5pm	CLOSED	Open 7am to 7.30pm
	Garden Pro-Shop	Open till 3pm	CLOSED	Open 7am to 7pm
GOLF TAMPINES	Tampines Course	AM Open PM last flight at 1.03pm No evening 9-hole	AM Open PM last flight at 1.03pm No evening 9-hole	Open AM/PM/ Eve 9-hole
	Tampines Golf Office	7am to 5pm	7am to 5pm	Open 7am to 7.30pm
	Tampines Driving Range	Open till 6pm <i>Last issuance of range balls at 5pm</i>	Open till 6pm <i>Last issuance of range balls at 5pm</i>	Open till 8.30pm <i>Last issuance of range balls at 8pm</i>
	Tampines Pro-Shop	Open till 3pm	Open till 3pm	Open 7am to 7pm
FOOD & BEVERAGE	Garden Golfers Terrace	Open till 6pm	CLOSED	OPEN
	Garden View Restaurant	Open till 9.30pm <i>By reservation only</i>	CLOSED	CLOSED
	Garden Lounge	CLOSED	CLOSED	CLOSED
	Poolside Cafeteria	Open till 3pm	Open till 3pm	Open till 6pm
	Tampines Golfers' Lounge	Open till 6pm	Open till 6pm	OPEN
CHANGING ROOMS	Main Clubhouse (Garden)	6.45am to 8pm	CLOSED	OPEN
	Sports Complex	6.45am to 3pm	6.45am to 5pm	OPEN
	Tampines Course	6.45am to 8pm	6.45am to 8pm	OPEN
SPORTS & RECREATION	Swimming Pool, Squash Court, Tennis Court, Glass Gym, Mahjong Room, Children's Room	Open till 2.30pm	Open till 4.30pm	OPEN
	Jackpot Room	CLOSED	CLOSED	CLOSED



A Premier Golfing Experience



Sign up now for Term Membership

Sign-up Now to Enjoy*

- F&B vouchers
- Complimentary golf games for 2 guests
- Complimentary golf lesson with a golf pro

Term Members Enjoy

- No monthly subscription fee
- Affiliate & reciprocal access to other top clubs in the region
- Full access to Country Club facilities including two championship golf courses for the entire family

Call Membership at **6592 0326 / 0327** or

Email: **membership@tmcc.org.sg**

for an application form

1 Tanah Merah Coast Road, Singapore 498722

Tel: (65) 6542 3040 Fax: (65) 6546 9114

www.tmcc.org.sg

**Terms and Conditions Apply.*

FAMILY BONDS

KEY TO TACKLING COVID-19 CHALLENGES

Strong familial ties can provide us all with the strength and resilience needed to tackle the challenges brought about by the COVID-19 pandemic. Strong families are the cornerstone of our society. Amid the COVID-19 pandemic, families play an integral role in strengthening our culture of solidarity and cohesiveness. This rings even truer for those who have been left estranged from their families as a result of COVID-19, such as the numerous Malaysian employees at Tanah Merah Country Club.

Due to a combination of border control measures imposed by both Singapore and Malaysia as a result of COVID-19, many Malaysians that work here have been left in no man's land. Faced with the prospect of losing their jobs in Singapore if they returned home, many decided to remain here and keep their rice bowls intact. Knowing that finding a job in the COVID-19 ravaged economy would not be easy, it was a difficult choice that had to be made. On its part, TMCC has continually supported its Malaysian workers by providing complimentary accommodation and meals for those who used to commute between Singapore and Malaysia across both causeways daily. For that, Chen Kang Sheng, Das & Sara (not their full names) are tremendously grateful to the Club for this kind gesture. The trio have been working at the Club for years (22 years for Chen, 20 years for Sara and 3 years for Das).

Chen is a Workshop Mechanic with the Golf Course Maintenance Team at Garden Course; Sara works with our Food & Beverage Team while Das is with Housekeeping. Despite the obvious differences in their respective duties, the trio play vital

roles in keeping TMCC's daily operations going.

Chen has been an ever-present sight with the Garden Course Maintenance Team for the past two decades. As a Mechanic, he is responsible for the operation and preventive care of golf course maintenance equipment. Inspecting, diagnosing and repairing mechanical defects or failures in various golf course maintenance equipment like diesel, gas, and electric powered golf course equipment are part of a day's work for him. He also instructs and trains turf management staff regarding preventive maintenance, equipment usage, proper cleaning and safe operation of equipment. It is a job that requires intense levels of concentration and focus, something Chen is perfectly accustomed to by now. Without his experience and foresight, the Course Maintenance Team would not be able to effectively deploy the equipment to ensure the Course is always in tip-top shape.

You might be familiar with Sara as he



Chen performing a routine check on the Golf Buggies

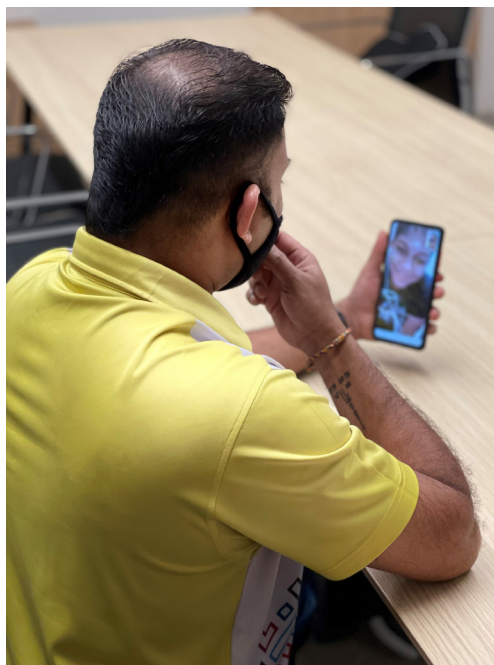


Chen posing for the camera

frequently helps the F&B team at both the Garden Golfers' Terrace and Tampines Golfers' Terrace. With close to two decades of experience, Sara is a stalwart of the F&B scene at the Club and is always eager to offer much needed advice to his juniors to whom he is a role model for. Whether it's customer service or operational issues, he is the go-to guy as his knowledge in these areas is considerable. By virtue of his longevity at the Club, Sara goes way back with many of our members and has in a way, grown up with them. Seeing a familiar face matters and knowing that he is in



Sara checking up on his son via Video Call



Das speaking with his daughter via Video Call



Das initiating a video call with his family



Sara all smiles as he poses for a photograph

control of the situation, one is guaranteed exemplary service at their table. Beyond a strictly professional relationship, Sara has established bonds with our members. It is this personal touch that makes TMCC feel like home for them.

While the job that Das performs daily might not be as visible, it is by no means less important. When

you visit the Changing Room or Lavatory and find that it has all the amenities required, that is because Housekeeping has done their job. Housekeeping is an operational department, which is responsible for cleanliness, maintenance, aesthetic upkeep, public area, back area and surroundings. Having plied his trade at several renown Country Clubs around Singapore (such as the now closed Jurong Country Club, Sembawang Country Club and Singapore Island Country Club), Das knows what makes a proper Housekeeping operation tick like clockwork. One of the more interesting aspects of his job is taking care of items reported under "Lost and Found" and ensuring they find their way back to their respective owners. It's no surprise then that members are appreciative of the work he does and always greet him with a smile etched on their faces.

For Chen, Das and Sara, plus many others like them, it has been a challenging period without prolonged face-to-face interaction

with their families back in Malaysia. Both are married with kids and as parents, it's normal to worry about how your little ones are growing up without regular interaction and guidance from their fathers. In the absence of physical contact, Das and Sara have been communicating daily with their families using tools like Facetime, WhatsApp, Skype and Zoom. To that end, the Club provides complimentary high-speed internet access to facilitate smooth video calls with picture perfect clarity and crystal-clear sound. While it's never the same as being there, the advent of technology at least now allows us to see and hear plus share moments of emotion with our loved ones. And in such trying times, we will certainly take what we can.

The trio are hugely appreciative of the Club's efforts to take care of it's stranded Malaysian workers during the ongoing COVID-19 pandemic that has affected all our lives in both big and small ways. Knowing that TMCC has their basic needs covered has least allayed some concerns and fears. This gives a peace of mind not just to them, but also their families back in Malaysia who at least know their fathers, husbands and sons are being well taken care of. TMCC has always pride itself on going above and beyond the line of duty to care for it's employees and we will continue to do that, even beyond the pandemic.



WET, WET, WET, YET TMCC IS NOT LEFT HIGH AND DRY

By Godfrey Robert

Club takes control of dire thunderstorm-hit situation with meticulous planning in drowning weather-beaten fears

It was a dismal New Year's Day.

As Singaporeans put behind a sombre 2020 caused by the COVID-19 pandemic, and looked ahead to 2021 with some promise, they were given frightening introduction to the new year. After 365 days of relative misery, the curtains went up for the dawning of a new decade. But they came down quickly, as was the heavy rainfall at the Changi area that caused the two Tanah Merah Country Club courses to be inundated with water.



About 318.6mm of rain fell at Changi from Friday's New Year's Day through to Saturday, which was more than the average of 238.3mm for the total month of January. Jan 2 experienced the heaviest rainfall of 210.6mm recorded between 12 noon and 7pm, putting all the downside in the 1 per cent of maximum daily rainfall records for the past 39 years. But the club, subsumed into the gloom, showed sheer resilience as it handled the dire situation in the best possible way.

Also, thanks to the foresight of the club management when they planned right to the minutest detail all the necessary ingredients that went into the works for the redevelopment of the two courses, Tampines and Garden, in the last three years. The heavy rain forced the Garden course to be closed for the afternoon session on Jan 1, and both sessions for the subsequent two weekend days. Garden's 18th hole saw the lake submerging the green and two large capacity pumps were hired in within an hour to help drain the lakes.

The pumps were deployed at lake 10 and 18 and the water released out into the nearest canal. This was run for some 36 hours and greatly helped to support the course to



View from back of 18th Green during flood

View from back of 18th Green after flood

be ready for Monday's morning play. The Garden's 18th hole, to everyone's delight, was unscathed after the water receded and was ready for play after mowing. Kudos to the teams that were involved in the redevelopment for use of the right material and those who worked on the recovery job after the heavy rains. The flooded greens at hole 6, 7 and 18 have all since recovered with no damage due to the resilience of the Platinum Paspalum grasses to withstand prolonged water inundation.

This is another outstanding feature of this grass species that can tolerate being under water for 1.5 days along with solid construction of the greens set to USGA specifications. Some areas of fairways and roughs, which were slightly sunken from flooding, were referred back to the original construction contractor for fast action repairs at no cost to the club. Balancing pipes between lakes were cleaned and cleared of debris to allow for faster dispersion of water and the club is well prepared for any future such deluges.

The Tampines course was also closed for the afternoon session on Jan 1 and for both sessions on Jan 2. But for Jan 3, it was closed only for morning play. From the lake on the 16th hole, water had entered the green side bunker and front portion of the green. And ponding occurred on fairways 2 and 17. However, by Jan 3 morning, it had dissipated in readiness for afternoon play.

For both courses the bunkers were relatively untouched and quickly reinstated for full playing condition. This was largely due to the latest in advanced bunker products using Dura Bunker, a patented geosynthetic bunker edge system that honours traditional aesthetics while transforming bunker maintenance, safeguarding design integrity and realising significant cost and labour savings.

The installation of bunker lines helped to quickly wick water away from the bunker sand and to prevent the bunker erosion. The product used is Bunker



View of 6th Green during flood



View of 6th Green after flood

Mat. DuraBunker is used at the edges of to maintain its edges, shape and other key aspects. The use of BunkerMat, a three-dimensional matting that is laid on the steep and complex shaped sides of bunkers, traps the sand to keep bunkers in good playable condition.

The synthetic mesh backing on BunkerMat creates strength and durability in the product, thus preventing BunkerMat to tear when the bunker sand is being tracked. BunkerMat's advantages are it minimises sand contamination, minimises bunker face erosion, reduces sand thickness required, reduces maintenance required and is UV stabilised for durability.

The proof of any pudding is in the eating, and going by what happened after the unexpected and unusual thunderstorms on New Year's Day, the club had done well in selecting the materials and locating prime points at its redeveloped courses so that in freak eventualities, TMCC is in a position to take complete control of managing the difficult outcomes.



View from Garden Banquet Room during flood

View from Garden Golfers' Terrace during flood

PHASE 3 GARDEN COURSE

SAFETY ENHANCEMENT TREE PLANTING - UPDATE DECEMBER 2020

We are pleased to inform members the completion of the following safety enhancements at Garden Course following our last notice issued in November 2020.

Hole #01/#15 Rough

Tabebuia Rosea Tree species along the rough line between #01 and #15 as a barrier for potential sliced tee-shots from Hole #01 towards fairway #15.



#01 (Par 4)

Tee-Box Right Hand Side

Agathis Trees were positioned to screen tee shots from #03 going right over to #13 Green and Fairway



#03 (Par 5)



#11 (Par 3)

Left Hand Side rough area

Additional Macarthur Palms and Schefflera trees planted to help screen tee shots from #11 towards tee #12 and #18



#12 (Par 4)

Added fencing/netting with MacArthur Palms to shield from #11 tee shots and view of golfers teeing from #12/#18.



#13 (Par 5)

Right Hand Side rough area

New planting to replace trees that did not survive construction. The trees were strategically positioned at this area to deter & penalise tee-shots going to the right' and to buffer potential pushed shots from #03



#14 (Par 3)

Tee Box

Further increased and thickened the number of trees and shrubs along left side of #14 tee covering both high and low areas to shield potential errant shots from #15



#15 (Par 4)

Tee Box Left Hand Side

Livistonia Palms planted to screen shots going left side towards Tee #14

THE TRAFFIC LIGHT DRILL TAKES OFF MENTAL STRESS

In a golf lesson or drill, the attention span of an individual varies. And when one does not get the routine right, chances are that he or she will give up by losing patience.

The secret is to keep the routines short and sweet, and too much should not be thrust in the individual, especially so if he or she is a beginner or a junior.

As such, one of our golf professionals has come up with a routine that would help the learner or beginner.

He says: "In our junior golf programmes, we as instructors have a very limited window of time to correct the swings of juniors before they lose their interest."

"To make things more challenging, juniors are often not tuned in to the nuances of technical golf instruction."

Thus, this drill was suggested:

1. Be aware of clubhead movement;
2. Keep their attention focused;
3. Hit down on the ball, and
4. Have an element of fun

The No. 1 drill will get the juniors to experience proper impact, and this is what I like to call the Traffic Light Drill. The beauty of this drill is that no equipment other than your golf club and ball is needed.

- 1 Picture the image below.



- 2 Make a practice swing just below where the real ball is.
- 3 As you make your practice swing, observe where the

clubhead is scraping against the turf or range mat. If it is behind the ball, then that is the red zone and a no-no. If your clubhead is scraping at where the ball is, then it is amber and a border-line level of impact. On the PGA Tour, all divots start ahead of where the ball is. The opposite is often witnessed during our weekend four-ball games.

- 4 Once the juniors can scrape the area in front of their imaginary ball, they are then told to hit the ball.
- 5 After their shot, they immediately must call out which part of the traffic light they hit. In the case of a thinned shot, they would report that they did not hit any of the lights.

This is a vitally important part of the drill as it keeps them aware of what they are doing and provides immediate feedback for improvement in a very non-technical manner.

Given that they are trying to ascertain which part of the traffic light they are going to hit, there is then no room for any technical swing thoughts.

There is empirical evidence to show that technical instructions to the brain prior to execution short-circuits the performance process.

Ever tried to consciously tie your shoelaces or sign your signature?

Yet many of us give ourselves a mini golf lesson prior to hitting the ball. Give the Traffic Light Drill a shot – you will be surprised by how mentally free you can be over the ball and the results that inevitably follow.

SURGE IN GOLF BOOKINGS AT GARDEN AND TAMPINES COURSES

Travel restrictions see utilisation rate of 92%-plus at TMCC

It is no surprise that bookings at Tanah Merah Country Club have increased since the game resumed activity during Phase Two of the rule relaxations under the Covid-19 pandemic restrictions.

When the courses reopened from June 2020, the policy was focused on member bookings only. From August 2020, the policy was relaxed to enable member guests' flights to be booked five days out from the date of play.

This is the first time in the history of the club that both of TMCC's courses, Garden and Tampines, have recorded a utilisation average (in terms of flights) in excess of 92 per cent (plus) over daily, weekly and monthly periods.

YEAR / COURSE	MONTH						AVERAGE
2016	July	Aug	Sep	Oct	Nov	Total	Average per mth
Garden	4227	4720	3017	3824	3172	18,960	3,792
Tampines	4229	3996	4637	3950	3633	20,445	4,089
2020	July	Aug	Sep	Oct	Nov	Total	Average per mth
Garden	5952	6635	6157	6812	6190	31,746	6,349 (+59%)
Tampines	4983	4951	5270	6297	5877	27,378	5,475 (+69%)

This means that on most days, the courses are 100 per cent booked. The main reason for this is that golfers cannot play in the Batam, Bintan and Johor courses – the three main destinations for Singaporeans – and are home-based because of the pandemic due to travel restrictions.

High demand for golf bookings will likely continue well into 2021 while travel restrictions remain in full force.

Golf utilisation is measured in two ways;

- 1: Total Players to total slots (120 slots per session)
- 2: Total Flights (30 flights per session)

Being forced to break away from regular activities; business, travel, leisure, socialising for close to three months, it was surely a time of rejoicing when it was announced that golf clubs could resume activities from June 19, 2020.

But some rules of the game had been changed, such as no touching of flags, bunker rakes being removed, along with ball washers plus course water stations and further to this, limited locker room amenities too.

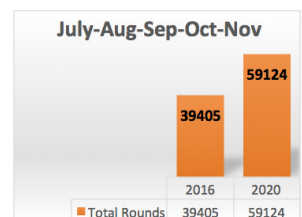
However, this did not deter golfers from wanting to return to play and from the first day of resumption bookings were highly sought after.

More recently, in November 2020, the TMCC booking policy was further reviewed, as such:

- Minimum 3 ball;
- The Booker MUST play in the flight that they booked;
- Flights are non-transferrable;
- If the Booker does not show up on the day of play he/she will be charged a no-show fee of \$250.00 (before GST);
- Maximum of ONE booking per Membership per day;
- If both the Principal Member and Spouse have booked a flight each on the same day, the Spouse's booking will be automatically cancelled, and the flight will be returned to the waiting list.

The revised booking policies have reduced booking cancellations and opened additional opportunities for more members to book and play. Golfing rounds at TMCC have increased month by month and the continued travel restrictions have ramped up demand.

Year 2016 was the last period TMCC operated with two 18-hole courses, before the redevelopment phase commenced for both Tampines and Garden. Looking at the same four-month period (July till November) Year 2016 versus 2020, in total rounds played, we can see the COVID-19 period effect (as shown in the charts below).



ATTENTION GOLF COURSE LITTER BUGS

NO BUTTS OR IFS, JUST STOP THE BAD HABITS

The fight against smoking and littering is very intense in Singapore.

As it is, smoking is allowed only in restricted areas and littering is strictly prohibited and could lead to you getting a fine. These deterrents do not always work, for there are offenders who are subsumed into what they call a habit, one that gets worse if unchecked. And cigarette butts on the golf course? This tantamounts to being taboo and should never take place in a platform that provides a healthy pursuit of the sport.

Imagine standing on the tee-box for your drive or when you are about to execute a putt yet you end up finding cigarette butts lying around. It will certainly put you off, and the frustration could lead to a wayward drive or a missed putt. So cut out the smoking habit, although some may claim that it calms the nerves. Do you realise that cigarette butts are single-use consumer plastic waste and represent the highest proportion of plastics that is polluting our seas and environment?

Cigarette butt filters are made up of cellulose acetate, a type of plastic that does not readily biodegrade. Thin cellulose acetate fibres are packed tightly to remove harmful contaminants from smoke before it is inhaled, with a single filter possibly containing more than 12,000 such fibres. We should not get to the stage whereby cultural acceptability of cigarette butt littering could be contributing to the littering issue. A key finding with people and litter is that the majority do conform while the odd 40 per cent are situational binners, who do so only when it is convenient.

As a golf club, TMCC is constantly working on the outreach strategy to seek and encourage the latter group to do the right thing by discarding their litter. At the same time, it continues to remind the majority to continue with the act of discarding their litter into the bins provided and be good role models. The club is at work on an integrated strategy to combine stricter enforcement, better infrastructure and outreach efforts that target specific groups of litterbugs.

This will be done through raising awareness of the dangers of littering to the environment plus our own personal health and wellbeing too. And to take pride in a reputed golf club that is working to encompass a zero-littering stance. The campaign will seek to promote the act of using bins as a positive social value and rope in role models such as influencers within the club that can promote good behaviour to the non-conformers.

The goal is to ultimately persuade the 4 in 10 of the member smokers, who still litter, to bin their rubbish and thus reduce the amount of cigarette butt litter by a noticeable percentage over a specific time frame. The club aims to reduce the amount of litter per hole in current littering hotspots by another percentage. This is much needed to reflect our target of making TMCC golf courses a clean place to enjoy and play golf. So, the club urges all members and guests to support the campaign and take a proactive stance by rendering litterbugs to task so that we can all enjoy a cleaner and more pleasant club environment.



CLUB COMPETITION WINNERS 2020

LADIES MEDAL OF MEDALS 5 January 2020 - Tampines Course

WINNER : Jess Beh
 RUNNER-UP : Jasmine Chew
 BEST GROSS : Boo Geok Ching



Jess Beh



Jasmine Chew



Boo Geok Ching

MEN MEDAL OF MEDALS 5 January 2020 - Tampines Course

WINNER : Tan Lee Hong
 RUNNER-UP : Jeffrey Tan Siak Lian
 BEST GROSS : Samir Bedi



Tan Lee Hong



Jeffrey Tan Siak Lian



Samir Bedi

LADIES MATCHPLAY CHAMPIONSHIP 15, 21 & 21 March 2020 - Tampines Course

WINNER : Jenny Chong
 RUNNER-UP : Sara Lew



Jenny Chong



Sara Lew

TMCC MATCHPLAY CHAMPIONSHIP 14, 15 & 21 March 2020 - Tampines Course

WINNER : Low Wee Jin
 RUNNER-UP : Fang Jia Wei
 JOINT-THIRD : Raymond Lee
 JOINT-THIRD : Stephen Tan



Low Wee Jin



Fang Jia Wei



Stephen Tan



HOLE IN ONE ACHIEVERS

Sue Yap Soh Mooi

Hole #16 (88M)
TMCC Tampines
Course
13.10.2020



Vincent Kang Swee Choon

Hole #16 (117M)
Keppel Keppel Club
15.10.2020



Lee Chong Win

Hole #4 (195M)
TMCC Tampines
Course
16.10.2020



Vivek Jain

Hole #6 (156M)
TMCC Tampines
Course
18.10.2020



Ng Chong Woon

Hole #4 (190M)
TMCC Tampines Course
01.11.2020

Lau Chang Huat

Hole #7 (140M)
TMCC Garden Course
18.11.2020



Tan Cheng Hai

Hole #7 (130M)
TMCC Garden Course
19.11.2020

Andrew Lim Thiam Huat

Hole #7 (140M)
TMCC Garden Course
25.11.2020



Mark Lim Cheng Chuan

Hole #7 (140M)
TMCC Garden Course
27.11.2020



Teo Han Kiat

Hole #6 (130M)
TMCC Tampines Course
28.11.2020

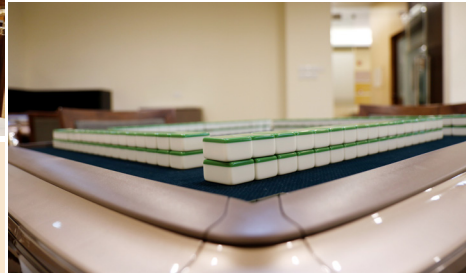
Anthony Mo Chao Yuan

Hole #16 (98M)
TMCC Tampines Course
28.11.2020



OCTOBER

Opening of NEW MAHJONG ROOM



**The Operating Hours are:
DAILY from 10:00am – 10:00pm**

Dear Members,

We are pleased to announce the opening of our NEW MAHJONG ROOM, which is now located at the Sport Complex, on 4 January 2021.

Kindly note the following restrictions, rules & regulations, which are also in line with Authority Safe Management Guidelines:

- A separate **SAFEENTRY** QR CODE will be set up for the Mahjong room and members will have to scan the QR code prior to entry;
- **NO consumption of food or beverages allowed in the room;**
- Members must be **masked up at ALL times;**
- Maximum of 3 tables shall be available for bookings or 12 players in the room at any one time;
- Each member is only allowed to book one (1) table; and
- Guest fees* chargeable at \$10 per guest for the common room

For the safety of Members, all mahjong tiles will be sanitised after each use, and before the tables are issued for use by the next group.

We hope Members will enjoy the brand new mahjong room.



*Please note that guest fees shall be revised, **effective from 4 Jan 2021**, to \$10 for each guest in the common room and \$15 in the private room. The private room shall be closed for the time being due to safe management restrictions and capacity limits of the mahjong room.

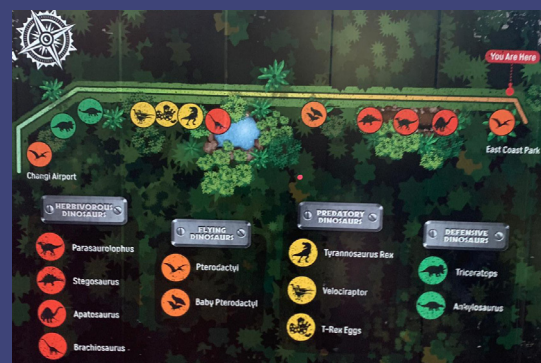
JURASSIC MILE TOUR WAS A HIT WITH 34 PARTICIPANTS

The catchphrases these days are enjoyable staycations, local tours, tourist attraction site visits and fun activities. Since the Covid-19 pandemic has wrecked the world of overseas holidays with the imposition of quarantine rules, stay home notices and safe distancing measures, the only option is to make do with activities in Singapore and on its adjoining islands.

Tanah Merah Country Club management and staff have also been thinking along those lines and came up with an interesting idea: the Changi Jurassic Mile tour. This activity is convenient because of its close proximity to the reputed club and it could generate friendship, camaraderie and bonding, all spiced up with more than a modicum of healthy exercise.

A total of 34 people (26 adults and eight children), comprising club members and guests, participated in the activity with the kind help of four staff (two each from the Sports Department and the Marketing Department). The group set off at an ideal 6.45pm start when it was cool and breezy and returned to the club by coach at 9.00pm on November 30. And before the group set off, warm-up exercises and games were conducted by staff from the Sports Department at the Sports Complex. The Walking Tour was led by Guides appointed by Changi Airport Group (CAG) to the entrance of the Changi Jurassic Mile, from where the tour officially began.

During the tour, the participants were among the first to witness the bright Christmas Lights turned on specially for the Festive Season. After the tour, the group was given an hour for Dinner at the Hub & Spoke Café @ Changi Airport Terminal 2. The Hub & Spoke is a new pit stop facility where visitors can rent bicycles, cool off



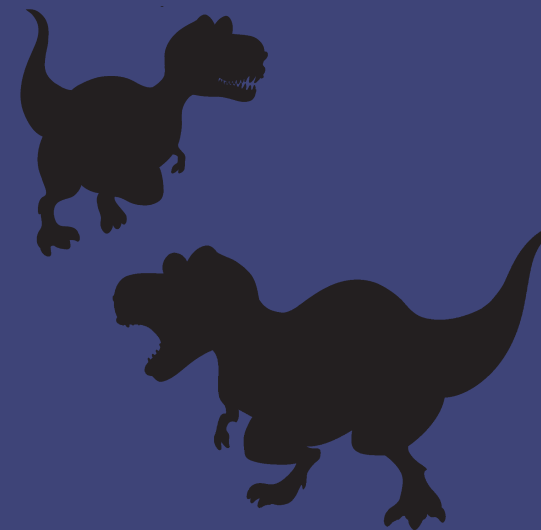
with a shower after exercise, or have a meal with family and friends. Also, exclusive Jurassic Mile Memorabilia including reusable face masks and playbooks (for the kids) were handed





out to the participants. The CAG had in October officially opened the Changi Airport Connector, a 3.5-kilometre cycling and jogging path that links Changi Airport to East Coast Park and the Park Connector Network with Transport Minister Ong Ye Kung as the guest-of-honour.

The Jurassic Mile is Singapore's newest and largest permanent outdoor platform that displays life-sized dinosaurs. More than 20 different prehistoric creatures from nine species are displayed along the one-kilometre path. They range from a towering Tyrannosaurus Rex to gigantic dinosaur eggs which should engage visitors who would be wowed by the exhibits.



TMCC WALK THE TALK

Since the COVID-19 pandemic wrecked the world with restrictions and forced many of us to work from home, many Singaporeans have taken to exercise as a form of breaking daily routines. One of the exercise indulgences is walking, and the omnipresence of properly-attired walkers, some even with knee guards, is still being seen.

The importance of walking as an effective physical activity encouraged the Tanah Merah Country Club Sports Department to organise a walk event on November 28 that also had a touch of history with lessons gleaned from the landmark sites. Eleven enthusiastic participants were



each handed a sports starter pack by the Sports Department to prepare them for the walk. The pack consisted of trail mix, an energy bar, a disposable mask, two mosquito patches, a colourful poncho, a water bottle and a can of 100-plus.

The walk began at 9am and participants were given bananas and water to prepare them for the walk. Sports executive, Dean Singh briefed the group on the do's and don'ts of the activity as well as a breakdown of the itinerary of the day.

He proceeded to play a game of Simon Says as an ice-breaker to breed familiarity among the participants during the lead-up to the warm-up before the group set-off.





The itinerary:

1. **Mangrove Swamp Boardwalk:** We proceeded to the first spot on our walk which was the Mangrove Swamp Boardwalk and managed to spot a few animals along the way, namely the Malayan water monitor lizard, a handful of mud skippers and heaps of mud lobsters. There was slight rain during the initial part of the walk and the colourful ponchos were on full display from the participants.
2. **Pasir Ris Bird Watching Tower:** The bird tower was next where the participants were briefed about the tower and took turns to go to the apex for a better look. Our guide for the day, Mizi, also shared snippets of the reason the tower was called the "Suicide Tower". There were some reports of mosquitoes and we assisted our members with the application of mosquito repellent for an "insect free experience".
3. **Kitchen Garden:** The garden was an eye-opener with all the herbs and plants that we consume daily. The participants had an opportunity to observe guava plants, okra and lemon grass up close and personal.

4. **Gallop Stable:** The stable was the next stop and our participants enjoyed feeding snacks such as carrots to the ponies. Darryl Ang took the opportunity to ride a horse and made friends with Bridget, the friendly horse.
5. **Pasir Ris Beach:** The last port of call was the beach where the gang enjoyed taking pictures and taking in the sights and sounds of the beach.
6. **Back to the Carpark:** The end of the walk saw all the participants gather at the carpark for refreshing, ice cold drinks provided by the Sports team. We also provided the members with bananas plus more trail mix and said our goodbyes after a great day out.





TAN TRIUMPHS IN A STRONG FIELD OF LIM'S

He was the exception rather than the rule.

For in the Christmas Themed Tennis Night 2020 held recently, Donovan Tan stood out in competitions flushed with the Lim's, some related.

In the highly competitive games amongst the seniors in the Adult's Time-Based Challenge, Tan reigned supreme among the five participants.

The competition format was tweaked to introduce a few surprise elements in the mix. The matches were based on a time-based format. Each round of play was to be a 15-minute format and the method through which points were gathered, allowed the players to maximise their points for a better opportunity to win the challenge. After a gruelling game format, Tan, the 2019 tennis champion, edged out the popular Lim Kong Wee to claim the title.

The final positions: **1 Donovan Tan, 2 Lim Kong Wee, 3 Lim Wee Kiat, 4 Dan Ong, 5 Liam Isaac**





All five players were rewarded with gifts from Santa, who was also a main attraction. The event was also one where kids joined in to soak in the excitement as 13 (nine adults and four kids) enthusiastic participants also competed.

The Sports Department presented all participants with a goodie bag of Christmas candies as well as a complimentary Santa hat to soak in the Christmas theme. Christmas carols were played and the games as well as challenges were played in great spirits. Snacks in the form of Chicken pies and a fruit platter as well as refreshing cans of cold water and 100-Plus were also made available for the players.

Kid's Challenges:

Ring Toss: In this challenge the four children, namely Elijah, Isabella, Kyra, and Katelyn had to throw a series of rings into the tennis tubes. With sheer persistence and perseverance, the youngest participant of the day, Kyra Lim won this challenge.

Bouncing Ball: Katelyn won this challenge with her cousin Elijah coming in a close second.

Challenge of the Lim's: The sets of cousins squared off against each other in a challenge of speed, agility and coordination involving the balancing of tennis balls on the tennis racquet. It was a very close battle with the brother and sister pair of Elijah and Isabella Lim winning a close photo-finish race.

Overall winners of the Kid's Challenge:

Champion: Isabelle Lim.

1st runner-up: Katelyn Lim.

2nd runner-up: Elijah Lim.

Best Effort and Never-Give-Up Attitude: Kyra Lim



WINE OF THE MONTH

January / February



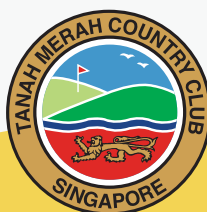
Saint Clair
Vicar's Choice
Pinot Noir 2018

Per Bottle
\$45

Any 2 Bottles Bundle
\$80



Saint Clair
Vicar's Choice
Sauvignon Blanc 2019



Features

Country: New Zealand
Type: Red
Appellation: Marlborough
Region: Marlborough
Vintage: 2018

Tasting note: Dark garnet. Sweet black cherry, blueberry and dried herb with interwoven floral notes, smoked paprika and vanilla coffee. Lively red cherry and ripe blackcurrants with a fresh acid balance and delicious round full palate finishing with warm powdered spice.

Features

Country: New Zealand
Type: White
Appellation: Marlborough
Region: Marlborough
Vintage: 2019

Tasting note: Pale straw with green hues. Lifted aromas of passionfruit and flint combined with fragrant ripe grapefruit. Light bodied and fresh with typical Marlborough flavours of passionfruit and ruby grapefruit. A delicate herbal thread, subtle flint and salty mineral notes lead to a long, lingering finish.

***While stocks last**

Price is in Singapore Dollars and inclusive of 7% GST.

Available at all F&B Outlets

To
purchase



F&B @ **6592 0386**



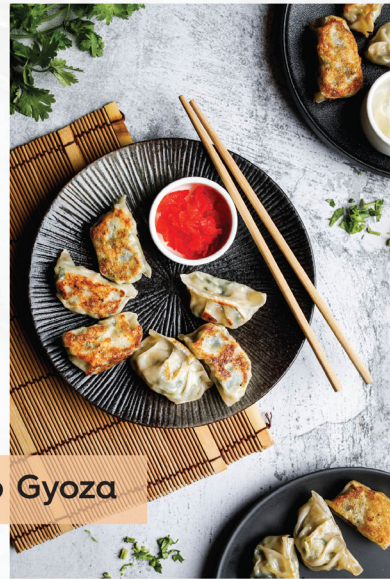
banquet@tmcc.org.sg



CLICK HERE FOR THE GOLFERS' TERRACE MENU



Green Curry Prawn



Shrimp Gyoza



Wagyu Hamburger



Roasted Duck Rice



Stir-fried Pork Belly



Kimchi Fried Rice



Glenmorangie The Originals

1 Bottle

\$118

2 Bottles

\$208

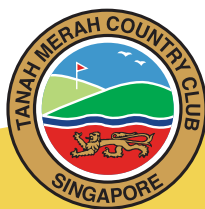
Glenmorangie 18 Years

1 Bottle

\$238

2 Bottles

\$438



GLENMORANGIE PROMOTION

**While stocks last*

All prices are in Singapore Dollars and inclusive of 7% GST.

Available at all F&B Outlets

To
purchase



F&B @ **6592 0386**



banquet@tmcc.org.sg



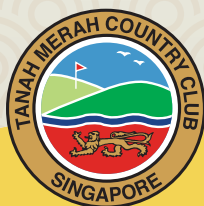
Glenfiddich 12 years
1 Bottle
\$118 nett



Glenfiddich 15 years
1 Bottle
\$158 nett



Glenfiddich 18 years
1 Bottle
\$218 nett



Chinese New Year Special Promotion!

**While stocks last*

All prices are in Singapore Dollars and inclusive of 7% GST.

Available at all F&B Outlets

**To
purchase**



F&B @ **6592 0386**



banquet@tmcc.org.sg

A Prosperous Lunar New Year Feast

Takeaway Menu 2021

Lunar New Year Festive Menu

	Size	Unit Price
发财鱼生 (三文鱼生) Prosperity Salmon Yu Sheng	Small Large Additional Salmon	\$52 \$84 \$11 per plate
龙虾鱼生 Lobster Yu Sheng	Small Large Additional Lobster	\$83 \$148 \$48 per plate
豪门鱼生 (鲍鱼鱼生) Abalone Yu Sheng	Small Large Additional Abalone	\$73 \$138 \$38 per plate
佛光普照 (正宗佛跳墙) Buddha Jump Over the Wall	Small Large	\$498 \$988
盆满钵满 (鲍鱼盆菜) Abalone Pun Choy	Small Large	\$248 \$468
好市发财 (蚝豉发菜) Braised Dried Oyster with Roasted Pork & Sea Moss	Small Large	\$48 \$88
鸿运当头 (脆皮烧肉) BBQ Roasted Pork	Per 500g	\$48
横财就手 (红烧元蹄) Braised Pork Knuckle	Per Portion	\$48
金鸡报喜 (脆皮烧鸡) Roasted Crispy Chicken	Half Whole	\$24 \$46
一团和气 (腊味糯米饭) Steamed Glutinous Rice with Waxed Meat	Small Large	\$24 \$48

ORDER PERIOD

Tuesday, 26 Jan to Friday, 26 Feb

OPERATING HOURS

Tuesday, 26 Jan to Friday, 26 Feb
12pm to 3pm or 5.30pm to 7pm

CLOSED ON

Mondays (except 15 Feb)
Friday, 12 Feb (1st LNY) &
Saturday, 13 Feb (2nd LNY)

COLLECTION POINT

Garden View Restaurant

Thursday, 11 Feb 2021 (Eve of LNY)
12pm to 6pm

Terms & Conditions: Collection 5 working days from order confirmation. All prices are inclusive of 7% GST. F&B will contact Member for order confirmation.

For
enquiries



Garden View Restaurant @ 6545 2891 / 6592 0388



banquet@tmcc.org.sg

Individual

SET MENU

\$88
per person

Min:
2 persons

双星报喜 (泰式海蜇拼潮阳虾枣)

Chilled Marinated Jellyfish
with Chaoyang Prawn Roll

福祿满家 (鲍鱼带子海参羹)

Braised Abalone with Fresh Scallop
& Sea Cucumber Thick Soup

年年行运 (菜脯蒸鳕鱼)

Steamed Cod Fish
with 'Chye Po' in Light Sauce

金钱满地 (花菇鱼鳔扒豆苗)

Braised Fish Maw with
Black Mushroom & Pea Shoots

五谷丰年 (海鲜炒饭)

Seafood Fried Rice

合家团圆 (红豆沙汤丸)

Cream of Red Bean
with Glutinous Rice Ball



4 persons
SET MENU
\$338

发财鱼生
Prosperity Yu Sheng

福祿满家 (鲍鱼带子海参羹)
Braised Abalone with Fresh Scallop
& Sea Cucumber Thick Soup

金鸡报佳音 (泰式香芒鸡)
Thai Style Crispy Boneless Chicken
with Mango

身壮力健 (黑松露煎日本和牛)
Pan Fried Japanese Wagyu Beef
with Black Truffle

龙马精神 (XO酱虾球豆苗)
Sauteed Prawn with Pea Shoots in XO Sauce

金银满屋 (金菇瑶柱焖伊面)
Braised Ee-Fu Noodles
with Enoki Mushrooms & Dried Scallop

步步高升 (海底椰芦荟果冻)
Chilled Lemongrass Jelly
with Sea Coconut & Aloe Vera



6 persons
SET MENU A
\$358

发财鱼生
Prosperity Yu Sheng

四海欢腾 (海味四宝)
Braised Dried Seafood Thick Soup

年年有余 (港蒸顺壳鱼)
Steamed Soon Hock, Hong Kong Style

金鸡报喜 (脆皮吊烧鸡)
Roasted Crispy Chicken

发财好市 (蚝豉发菜)
Braised Dried Oyster
with Roasted Meat & Sea Moss

一团和气 (腊味糯米饭)
Steamed Glutinous Rice
with Waxed Meat wrapped in Lotus Leaf

合家团圆 (红豆沙汤丸)
Cream of Red Bean
with Glutinous Rice Ball



6 persons
SET MENU B
\$488

发财龙虾鱼生
Prosperity Lobster Yu Sheng

福祿满家 (鲍鱼带子海参羹)
Braised Abalone with Fresh Scallop
& Sea Cucumber Thick Soup

年年行运 (菜脯蒸鳕鱼)
Steamed Cod Fish
with 'Chye Po' in Light Sauce

锦绣春明 (特酱烧鸭)
Cantonese Style Roasted Duck

身壮力健 (黑松露煎日本和牛)
Pan Fried Japanese Wagyu Beef
with Black Truffle

金银满屋 (金菇瑶柱焖伊面)
Braised Ee-Fu Noodles
with Enoki Mushrooms & Dried Scallop

步步高升 (海底椰芦荟果冻)
Chilled Lemongrass Jelly
with Sea Coconut & Aloe Vera



8 persons
SET MENU A
\$568

发财鱼生
Prosperity Yu Sheng

福祿满家 (鲍鱼带子海参羹)
Braised Abalone with Fresh Scallop
& Sea Cucumber Thick Soup

年年有余 (港蒸顺壳鱼)
Steamed Soon Hock, Hong Kong Style

金鸡报喜 (脆皮吊烧鸡)
Roasted Crispy Chicken

嘻哈大笑 (鲜果苹果虾球)
Sauteed Prawn
with Fresh Fruit in Apple Sauce

发财好市 (蚝豉发菜)
Braised Dried Oyster
with Roasted Meat & Sea Moss

金银满屋 (金菇瑶柱焖伊面)
Braised Ee-Fu Noodles
with Enoki Mushrooms & Dried Scallop

步步高升 (海底椰芦荟果冻)
Chilled Lemongrass Jelly
with Sea Coconut & Aloe Vera



8 persons
SET MENU B
\$838

发财龙虾鱼生
Prosperity Lobster Yu Sheng

盆满钵满 (鲍鱼盆菜)
Stewed Eight Treasures
served in Claypot

年年行运 (菜脯蒸鳕鱼)
Steamed Cod Fish
with 'Chye Po' in Light Sauce

酱烧西班牙黑毛猪排骨 (东成西就)
BBQ Spanish Iberico Pork Ribs

一团和气 (腊味糯米饭)
Steamed Glutinous Rice
with Waxed Meat wrapped in Lotus Leaf

合家团圆 (红豆沙汤丸)
Cream of Red Bean with
Glutinous Rice Ball



MALAYSIA

Saujana Golf & Country Club

Saujana Resort, Section U2
40150 Shah Alam
Selangor Darul Ehsan
Tel : 603 7846 1466
Fax : 603 7847 5830
golf@saujana.com.my

Reciprocal Member is required to produce:

• Letter of Introduction • Membership Card • Passport to verify their identity and to show that they are not residents of the same Country as the Host Club (Japan) • Handicap Certificate

AUSTRALIA

The Lakes Golf Club

Cnr King Street & Vernon Ave,
Eastlakes, New South Wales
Tel: +61 (02) 9669 1311
Fax: +61 (02) 9669 6206
www.thelakesgolfclub.com.au
info@thelakesgolfclub.com.au

JAPAN

Shinwa Golf Group (Japan)

Members are required to make bookings through TMCC. Please contact Samantha Leong/Garden Golf Office at 6592 0343 for further assistance.

AFFILIATE CLUBS

AUSTRALIA

Moonah Links
55 Peter Thomson Drive
Fingal VIC 3939, Australia
Tel : 61 3 5988 2000
Fax: 61 3 5988 2094
www.moonahlinks.com.au

Terrey Hills Golf & Country Club
116 Booralie Road, Terrey Hills
New South Wales, Australia 2084
Tel : 61 2 9450 0155
Fax: 61 2 9450 0034
www.terreyhillsclub.com.au

Woodlands Golf Club
109 White Street
Mordialloc, Victoria 3195
Australia
Tel : 61 3 9580 3455
www.woodlandsgolf.com.au
Golf_Manager@woodlands.com.au

Yarra Yarra Golf Club
567 Warrigal Road,
Bentleigh East,
Victoria 3165, Australia
Tel: (61) 9575 0575
Fax: (61) 9575 0585
www.yarrrayarra.com.au

CAMBODIA

Angkor Golf Resort
Kasekam Villiage, Sra Nga
National Route 6 (Airport Road)
Siem Reap, Cambodia
Tel: +855 (0) 63 767 688
Fax: +855 (0) 63 761 140
www.angkor-golf.com

CHINA

Imperial Springs International
Summit Club
1 Imperial Springs Avenue, Conghua
Guangdong 510970, China
Tel : 86 20 3108 8888
Fax: 86 20 3108 8098
www.imperialsprings.com

Red Flag Valley, Dalian
Cha'an Village Hongqi Town
Ganjingzi District, Dalian 116033, China
Tel : 86 411 8646 6666
Fax: 86 411 8428 0471
www.rfvgolf.com

Sheshan Golf Club
Lane 288 New Lin Yin Avenue
Sheshan National Tourism Resort
Songjiang District,
Shanghai 201602
Tel : 86 21 5779 8008
Fax: 86 21 5779 8006
www.sheshangolf.com

Spring City Golf & Lake Resort
Tangchi Yiliang, Yunnan Province
Peoples Republic of China, 652103
Tel : 86 871 6767 1188 or
86 871 6767 1185
www.springcityresort.com

Suzhou Jinji Lake International
Golf Club
No. 2 Guobin Road,
Suzhou Industrial Park,
Jiangsu, 215021, China
Tel : 86 512 6288 6868 or
86 512 6288 3426
www.jinlilakegolf.com

HONG KONG

Clearwater Bay Golf & Country Club
139 Tai Au Mun Road,
Clearwater Bay, New Territories,
Hong Kong
Tel : 852 2335 3882
Fax: 852 2719 4207
www.cwbgo.org
golf@cwbgo.org

INDONESIA

Damai Indah Golf
Bumi Serpong
Damai (BSD) Course
Jln. Bukit Golf I, Sektor VI, Serpong
Tangerang 15310, Indonesia
Tel : 62 21 537 0290
Fax : 62 21 537 0288
www.damaiindahgolf.com

Pantai Indah Kapuk (PIK) Course
Marina Indah, Penjaringan, Kapuk
Jakarta 14470, Indonesia
Tel : 62 21 588 2388
Fax: 62 21 588 2391

Royale Jakarta Golf Club
Jalan Raya Halim Tiga,
Halim Perdanakusuma Jakarta Timur 13610,
Indonesia
Tel : 62 21 80 888 999
Fax: 62 21 80 878 877
www.royalejakarta.com

JAPAN

Ashinoko Country Club
4708 Minamiharasuga, Mishima-shi,
Shizuoka 411-0000, Japan
Tel : 81 55 985 2122
Fax: 81 55 985 2480
www.ashinokocc.com
reserve@ashinokocc.com

KOREA

Sky 72 Golf Club
2029-1, Woonseo- Dong,
Joong- Gu, Incheon, Korea
Tel : 82 327 418 562
Fax: 82 327 439 108
www.sky72.com

Teddy Valley Golf & Country Club
365 Hanchangro, Andeokmyeon,
Seoguipo City, Jeju,
South Korea 699-921
Tel : 82 647 931 201
Fax: 82 647 931 108
www.teddyvalley.com

MALAYSIA

The Mines Resort & Golf Club
Jalan Kelikir, Mines Resort City,
43300 Seri Kembangan
Selangor Darul Ehsan, Malaysia
Tel : 60 3 8943 2288
Fax: 60 3 8943 9212
www.minesgolf.com.my

THAILAND

Alpine Golf Club
99 Moo 9 Bangkhan-Sathanevithayu Road
Klong 5, Klong Luang
Pathumthani 12120, Thailand
Tel : 66 0 577 3333
Fax: 66 2 577 7100
www.alpinegolfclub.com

Loch Palm Golf Club
38 Moo 5 Vichitsongdram Rd
Kathu District, Phuket 83000,
Thailand
Tel : 66 076 321 929 34
Fax: 66 076 321 927 8
www.lochpalm.com

Red Mountain Golf Club
119 Moo 4 Vichitsongkram Rd,
Kathu District, Phuket 83120,
Thailand
Tel : 66 076 322 000 1
Fax: 66 076 322 009
www.mbgkolf.com/redmountain

Riverdale Golf Club
123/5 Moo1 Tiwanon Road,
Bang Kadi Sub-District,
Muang Pathum Thani District,
Pathum Thani 12000, Thailand
Tel : 66 02501 2789
Fax: 66 02501 1833
www.mbgkolf.com/riverdale

VIETNAM

The Montgomerie Links
Dien Ngoc Commune,
Dien Ban District,
Quang Nam Province,
Vietnam
Tel : 84 510 3 942 942
www.montgomerielinks.com
reservations@montgomerielinks.com



GARDEN VIEW RESTAURANT (GVR)

Situated in the main clubhouse of Garden Course, it can accommodate 130 persons in a comfortable air-con, elegant setting. With a panoramic view of the golf course, the Garden View Restaurant offers attentive service, and warm ambience.

Operating Hours:

Daily

Lunch : 12.00pm to 3.00pm (Last Order – 2.30pm) • Dinner : 6.30pm to 10.00pm (Last Order – 9.30pm)

Closed on Mondays except on Public Holidays

Tel: 6545 2891 / 6592 0388.

GARDEN BANQUET ROOM (GBR)

Whatever the need, weddings, birthdays, product launches, golf prize-presentation etc, GBR can cater up to 250 diners with its balcony overlooking the serene surroundings of the Garden Course.

Tel: 6592 0386 / 6592 0385

GARDEN LOUNGE (GL)

The lounge is situated adjacent to Garden View Restaurant and members can enjoy the magnificent view of the Garden Course.

Operating Hours:

Sundays to Thursdays 3.00pm to 10.00pm (Last Order – 9.30pm)

Fridays & Saturdays 3.00pm to 12.00am (Last Order – 11.30pm)

Closed on Mondays except on Public Holidays

Tel: 6592 0319

GARDEN EVENTS ROOM (GER)

The Events Room caters up to 100 persons for sit-down dinners and has parquet flooring for dancing. The room is also a popular venue for the club's social activities.

Tel: 6592 0386 / 6592 0385.



FAST FACTS

TAMPINES COURSE:

18-hole Buggy Course

- Redesigned by: Phil Jacobs (2017)
- Total Yardage: 6,887metres (Par 72)
- Course Rating: 76.1
- Fairways & Roughs: Zoysia matrella
- Greens: Paspalum platinum TE

GARDEN COURSE:

18-Hole Buggy / Walking Course

- Redesigned by : Robert Trent Jones II (2020)
- Total distance : 5706 metres (Par 71)
- Course rating : 70.3
- Fairways & Rough : Zoysia matrella
- Green : Paspalum platinum TE

Caddie Services (with buggy)	18-Hole	9-Hole
Twin-share (1 caddie to 2 golfers)	\$70.00	\$35.00
Single golfer	\$50.00	\$25.00

***Cash payment required for caddie services**
All rates are in Singapore dollars and GST is not applicable.

GOLF OFFICES OPERATING HOURS

TAMPINES COURSE

Mondays	Closed
Other Days	7.00am till 7.30pm

GARDEN COURSE

Tuesdays and Thursdays	9.30am to 7.30pm
Other Days	7.00am to 7.30pm

PROSHOP OPERATING HOURS

TAMPINES COURSE

Monday	Closed
Other days	7.00am to 7.00pm

GARDEN COURSE

Tuesday & Thursday	11.30am to 7.00pm
Other days	7.00am to 7.00pm

For enquiries, kindly call:

- Tampines Golf Office 6513 7818 & 6513 7819
- Tampines Proshop 6592 4808
- Garden Golf Office 6545 1731 & 6592 0343
- Garden Proshop 6592 0371

POOLSIDE CAFETERIA

With a prime vantage point overlooking the swimming pool at the Sports Complex, this poolside retreat is the perfect place for refreshing the spirit after a day of fun in the sun. Famous for its local fare served up with a warm smile.

Operating Hours:

Tuesdays to Fridays	12.00pm to 8.00pm (Last Order – 7.30pm)
Saturdays, Sundays & Public Holidays	8.00am to 8.00pm (Last Order – 7.30pm)
Closed on Mondays	

POOLSIDE COVERED TERRACE (PCT)

Overlooking the best view of both worlds, a panoramic view of Garden Course and the calm water of mesmerising pool amidst beautiful landscape, the Poolside Covered Terrace is a good venue for barbecue or social gatherings and can hold 30 tables with buffet tables placed on the pool deck.

For bookings of rooms for private functions, please call F&B office at Tel: 6592 0386 / 6592 0385.

TAMPINES GOLFERS LOUNGE & TERRACE

Tampines Golfers' Lounge (air-conditioned) adjacent to the non-airconditioned Golfers' Terrace for dining.

Operating Hours:

Monday (Except on Public Holidays)	Closed
Tuesdays to Sundays & PH	7.00am to 8.00pm
Eve of PH	7.00am to 8.00pm

Garden Golfers' Terrace

Opening Hours:

Mondays & Wednesdays	7.00am to 8.00pm
Tuesdays & Thursdays	11.00am to 8.00pm
Fridays to Sundays & PH	7.00am to 10.00pm
Eve of PH	7.00am to 10.00pm

GARDEN VIEW WING

1st
STOREY

Heliconia Room

Need to hold board meetings, workshops, seminars etc? Book the Heliconia Room with seating capacity from 30 to 60 persons, offering various set-ups.

Ixora Room

Cooking and baking are such an enjoyment with a stylish kitchen studio. The room can also be used to conduct talks ranging from beauty to personal enrichment up to 40 persons. So look out for the various activities that we have in store for you printed in the bi-monthly newsmagazine.

2nd
STOREY

Lotus Room

Dining in privacy is guaranteed here. To add some sizzle to your events with musical touch, look no further, karaoke is recommended for more fun! Seating capacity – 20 pax is available for booking.

Hibiscus Room

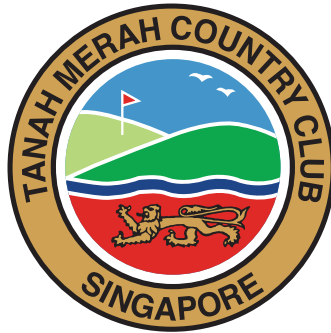
More spacious than the Lotus Room, you may organise your gathering and dine in private here. Seating capacity is 30 to 60 persons. Lunch - \$500 minimum spending (on food and non-alcoholic beverages); Dinner - \$700 minimum spending (at least minimum \$600 on food)

Karaoke Lounge

Belt out your best hit songs at the self-operated Karaoke Lounge, with a seating capacity for 20 persons.

Operating Hours:

Sundays, Tuesday, Wednesdays and Thursdays



Club Safe Management GUIDE

Updated: 8 January 2021

Restrictions to Club Entry

- **No entry** for those who are quarantined, serving their Stay-Home-Notice or have travelled overseas in the last 14 days, **unless exempted by the relevant authority**
- **No entry** if you are unwell, having a fever or experiencing flu-like symptoms



The Ministry of Health mandates that masks have to be worn at all times, except while eating and drinking. **Once you are done with your meal, please put on your mask when you are relaxing or chatting with friends while seated at the dining table.**

Wearing a mask helps to:

- Reduce the risk of airborne transmission of viruses from saliva droplets, produced when talking; and
- Lessen the likelihood of droplet transmission through cough and sneezes.

Let's all do our part to ensure a safe and secure Club environment for everyone!



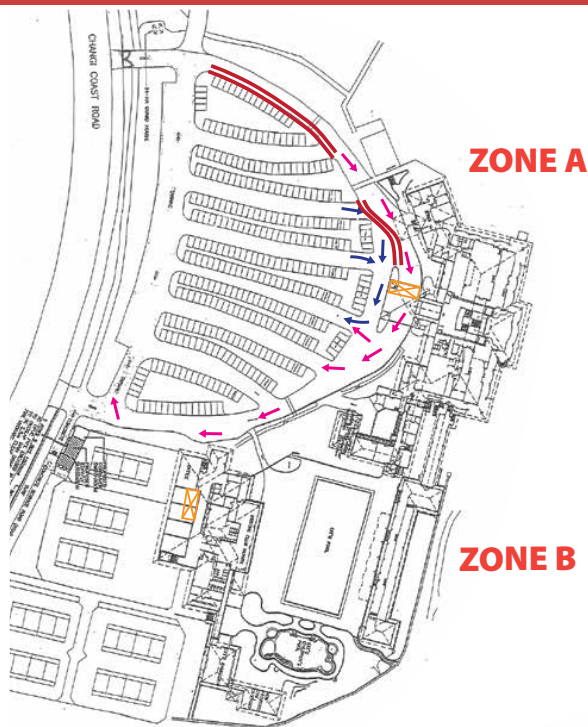
CLUB ENTRY & ARRIVAL

All Members, Guests and Staff will have their temperature checked and will be required to check-in and check-out with TraceTogether via any of these methods:

QR Code (located at entry points and also available on TMCC's website) or
Scan NRIC/Trace Together App or Token



Garden Location



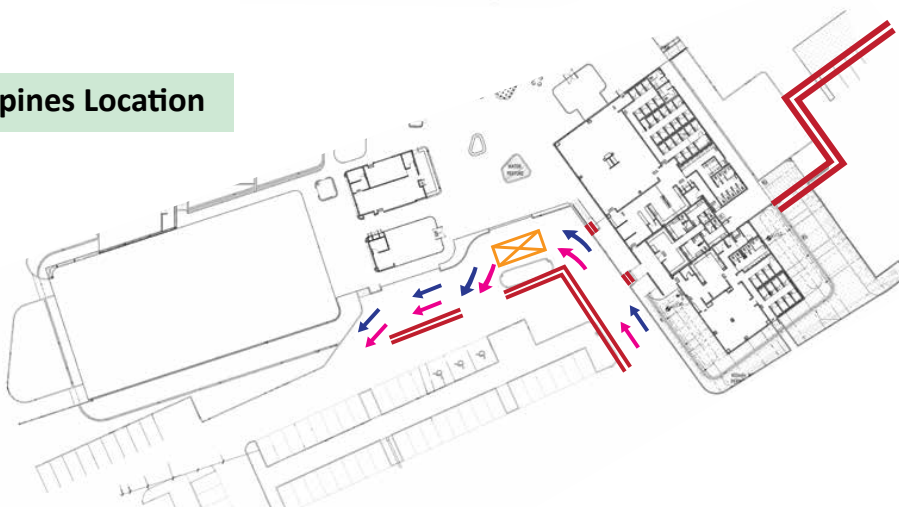
Garden Location



Tampines Location



Tampines Location

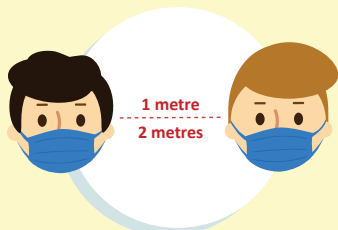


LEGEND

-  Barrier
-  Cars entering Club & dropping golf bags
-  Cars collecting bags & exiting Club
-  Safe Entry Scan + Temperature Taking

GENERAL ADVISORIES & MITIGATION MEASURES

Safe Distancing



Maintain **at least 1 metre apart** from the next person or **2 metres when exercising**



Wear a mask at all times unless engaging in strenuous activities.

Hygiene Mitigation Measures



- **High contact touch points** shall be hard sanitised with a chemical coating which will keep surfaces sanitised for weeks.
- All **gym equipment** are regularly sanitised throughout the day.
- All **golf buggies** will be thoroughly cleaned and sanitised after each round before reissue.
- **Ice making machines: Not in use**



- **Hand sanitisers** will be placed throughout the Clubhouse for Members' uses
- **No reading materials will be available.**

Personal Hygiene

Practise good personal hygiene at all times.



Wash hands regularly.
Hand sanitisers available.



Avoid touching your face with your hands



Cough into tissue and throw away in the dustbin



Visit your doctor if you are feeling unwell

GOLF

Golf Courses

Status

Course Maintenance
Days

DID

OPEN

Tampines Mondays (Whole day)

Garden Tuesdays (AM)
Thursdays (AM)

Tampines 6513 7818 / 6513 7819

Garden 6592 0343 / 6545 1731

RESTRICTIONS

- Golfers must practice safe distancing **at least 2 metres apart.**
- Golfers are to proceed to their respective buggies on arrival as the changing room and 19th hole will have restricted access and controls. Be ready to play on arrival.
- Golfers to adopt the “**USE AND LEAVE**” policy.
- **Changing room** - Golfers should only shower if absolutely necessary and leave soon after.
- **Toilet facilities** - available.
- Plan your trip to allow time to complete your SafeEntry check on arrival.
- Safe Play:
 - * Don't touch flagsticks
 - * No bunker rakes - local rule applies
 - * No on-course ball washers
 - * No sharing of golf equipment
- No more than **8 persons per flight** including caddie(s).

GOLF

Golfing

Status

OPEN

Operating Hours

Tampines 7.00am to 7.30pm

Garden 7.00am to 7.30pm

Weekend
Bookings

Manual balloting till further notice.

Weekday
Bookings

Online balloting till further notice.

DID

Tampines 6513 7818 / 6513 7819

Garden 6592 0343 / 6545 1731

RESTRICTIONS

- **No walk-in bookings** until further notice.
- **Minimum 3-ball for** Weekday and Weekend bookings.
Please refer to latest updated golf booking information from the website.

Driving Range

Status

OPEN

Operating Hours

Mondays Closed whole day

Tuesdays to Sundays 7.00am to 8.30pm

Last ball issue 8.00pm

DID

Tampines 6513 7818 / 6513 7819

RESTRICTIONS

- Driving Range: **Max 40 golfers**
- Putting Green: **Max 4 golfers**
- Chipping Green: **Max 2 golfers**
- Golfers must practice safe distancing **at least 2 metres apart.**
- Pin flags will be removed from the practice putting greens.

GOLF

Changing Rooms

Status

Operating Hours

RESTRICTIONS

OPEN

7.00am to 10.00pm (Daily)

- **Stringent Capacity Limits** will be imposed at **ALL** times.
- **Numbered Tags** will be issued to ensure that the changing room capacity limits are not breached. Members are reminded to return the numbered tags when leaving the changing room.
- Only **Alternate Lockers** will be issued (to ensure physical distancing).
- **High-touch points** will be cleaned and disinfected at least twice or more a day, including:
 - Keys (before reissue)
 - Key Cards (before reissue)
 - Door handles
- **Bath towels** can now be issued.
- **Changing room amenities shall be reinstated.**
- Users must not socialise and should minimise interaction.

Tampines

- Male Changing Room - **Max 62 persons**
- Female Changing Room - **Max 32 persons**

Garden

- Male Changing Room - **Max 53 persons**
- Female Changing Room - **Max 22 persons**

F&B

Garden Golfers' Terrace

Status

OPEN

Operating Hours

Mondays & Wednesdays	7.00am to 8.00pm
Tuesdays & Thursdays	11.00am to 8.00pm
Fridays to Sundays & PH	7.00am to 10.00pm
Eve of PH	7.00am to 10.00pm

DID

6592 0380

RESTRICTIONS

- **Max 8 persons** per table.
- **No mixing between groups** from different groups.
- **At least 1 metre** safe distancing between individuals.
- **All tables will be at least 1 metre apart.**
No moving or joining of tables is allowed.
- **Face masks must be worn at ALL times** unless when eating or drinking.

Tampines Golfers' Terrace

Status

OPEN

Operating Hours

Tuesdays to Sundays & PH	7.00am to 8.00pm
Eve of PH	7.00am to 8.00pm

Closure

Mondays (Whole day)
Except on Public Holidays

DID

6513 7815

RESTRICTIONS

- **Max 8 persons** per table.
- **No mixing between groups** from different groups.
- **At least 1 metre** safe distancing between individuals.
- **All tables will be at least 1 metre apart.**
No moving or joining of tables is allowed.
- **Face masks must be worn at ALL times** unless when eating or drinking.

TAMPINES LOCATION

Smoking Lounge

Status

OPEN

Operating Hours

7.00am to 9.30pm (**Daily**)

RESTRICTIONS

- **Max 6 persons** in the room.
- **Face masks must be worn at ALL times** unless when eating or drinking.

F&B

Garden View Restaurant

Status

OPEN

Operating Hours

Tuesdays to Sundays 12.00pm to 3.00pm
6.30pm to 10.00pm

Closure

Mondays (Whole day) Except on Public Holidays

DID

6545 2891 / 6592 0388

RESTRICTIONS

- **Max 8 persons** per table.
- **No mixing between groups** from different groups.
- **At least 1 metre** safe distancing between individuals.
- **All tables will be at least 1 metre apart.**
No moving or joining of tables is allowed.
- **Face masks must be worn at ALL times** unless when eating or drinking.
- One table booking for each member.

F&B

Poolside Cafeteria

Status

OPEN

Operating Hours

Tuesdays to Fridays 12.00pm to 8.00pm

Weekends & PH 8.00am to 8.00pm

Closure

Mondays (Whole day) Except on Public Holidays

DID

6592 0381

RESTRICTIONS

- **Max 8 persons** per table.
- **No mixing between groups** from different groups.
- **At least 1 metre** safe distancing between individuals.
- **All tables will be at least 1 metre apart.**
No moving or joining of tables is allowed.
- **Face masks must be worn at ALL times** unless when eating or drinking.

Garden Lounge

Status

CLOSED

SPORTS

GYM

Status

OPEN

Operating Hours

7.00am to 9.30pm (**Daily**)

DID

6592 0309

Power Workouts

Conducted at **Heliconia Room** starting Monday, 4 January
(**Max 10 persons**)
Mondays, Wednesdays & Fridays - 11.00am to 12.00pm

RESTRICTIONS

- Maintain safe distancing **at all times**.
- **Max 15 persons** at any one time.
- **No guests allowed.**
- All Members **must sanitise their hands** before entering the gym.
- All gym users are reminded to clean the gym equipment before and after each use.

Swimming Pool

Status

OPEN

Operating Hours

7.00am to 9.00pm (**Daily**)

DID

6592 0313

RESTRICTIONS

- Maintain safe distancing **at all times**.
- **Max 50 persons** in the pool at any one time.

Kids' Pool

Status

OPEN

Operating Hours

7.00am to 9.00pm (**Daily**)

DID

6592 0313

RESTRICTIONS

- Maintain safe distancing **at all times**.
- **Max 12 persons** in the pool at any one time.

SPORTS

Changing Rooms

Status

Operating Hours

OPEN

7.00am to 10.00pm (**Daily**)

RESTRICTIONS

- **Stringent Capacity Limits** will be imposed at **ALL** times.
- **Numbered Tags** will be issued to ensure that the changing room capacity limits are not breached. Members are reminded to return the numbered tags when leaving the changing room.
- Only **Alternate Lockers** will be issued (to ensure physical distancing).
- **High-touch points** will be cleaned and disinfected at least twice or more a day, including:
 - Keys (before reissue)
 - Key Cards (before reissue)
 - Door handles
- **Bath towels** can now be issued.
- **Changing room amenities shall be reinstated.**
- Users must not socialise and should minimise interaction.
- Male Changing Room - **Max 18 persons.**
- Female Changing Room - **Max 14 persons.**
- Children Changing Room - **Max 3 persons.**

SPORTS

Tennis

Status

OPEN

Operating Hours

7.00am to 10.00pm (**Daily**)

DID

6592 0313

RESTRICTIONS

- **Max 8 players per group** per court.
- No sharing of equipment.
- Each player is encouraged to have his/her own set of balls marked distinctively.

Squash

Status

OPEN

Operating Hours

7.00am to 10.00pm (**Daily**)

DID

6592 0313

RESTRICTIONS

- **Max 5 players per group** per court.
- No sharing of equipment.

Table Tennis

Status

OPEN

Operating Hours

7.00am to 10.00pm (**Daily**)

DID

6592 0313

RESTRICTIONS

- **Max 5 players per group** per table.
- No sharing of equipment.

SPORTS

Basketball

Status

OPEN

Operating Hours

7.00am to 10.00pm (Daily)

DID

6592 0313

RESTRICTIONS

- **Max 8 players** per court.

Badminton

Status

OPEN

Operating Hours

7.00am to 10.00pm (Daily)

DID

6592 0313

RESTRICTIONS

- **Max 8 players per group** per court.

Reading Room

Status

OPEN

Operating Hours

7.00am to 10.00pm (Daily)

DID

6592 0313

RESTRICTIONS

- **Max 4 persons** at any one time.

Children's Room

Status

TEMPORARY OPEN AS READING ROOM

Operating Hours

7.00am to 10.00pm (Daily)

DID

6592 0313

RESTRICTIONS

- **Max 8 persons** at any one time.

SPORTS

Mahjong Room

Status

OPEN

Operating Hours

10.00am to 10.00pm (**Daily**)

DID

6592 0313

RESTRICTIONS

- No more than **3 tables or 12 players** and each group must be spaced at least 1 metre apart.
- Tables and mahjong tiles shall be sanitised after each session.

Jackpot Room

Status

OPEN

Operating Hours

1.00pm to 9.30pm (**Daily**)

DID

6592 0308

RESTRICTIONS

- Maintain safe distancing **at all times.**
- **Max 9 persons** (including staff) at one time.
- Only Members above 21 years are allowed.
- **No Guest allowed.**
- Food and drinks are not allowed.
- No loitering, only gaming members are allowed.

Karaoke Room

Status

CLOSED

Pool Table

Status

CLOSED

Foosball Table

Status

CLOSED



SAFETY MEASURES



Use **SafeEntry** to check in
and check out for contact tracing

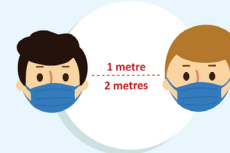


Restrictions to Club Entry

- **No entry** for those who are quarantined, serving their Stay-Home-Notice or have travelled overseas in the last 14 days, **unless exempted by the relevant authority**
- **No entry** if you are unwell, having a fever or experiencing flu-like symptoms



Face masks must be worn at ALL times



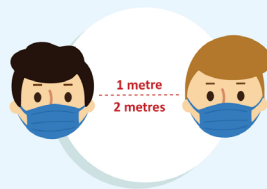
Maintain **at least 1 metre apart** from the next person or **2 metres when exercising**



SAFETY MEASURES



Face masks must be worn
at **ALL times** unless doing
strenuous exercise



Maintain **at least 1 metre apart**
from the next person or
2 metres when exercising



All Members **must**
sanitise their hands
before entering the gym